



The Newsletter

of the National Society for the
Preservation of Covered Bridges, Inc.

Spring 2023

2023 Fall Safari in Northern Vermont



VT/45-08-02, Cambridge Junction or Poland or Station Bridge, Lamoille County, Vermont

Photo by Alan Hartmann. See article on the back cover.

In this issue

Membership.....	2	News of Members.....	7
NSPCB Meeting Calendar	2	Society Publications	8
President's Message	3	World Guide Updates	9
Sanborn Bridge Update	4	Covered Bridge Meetings & Events	10
King Bridge Update.....	5	Covered Bridge News.....	11-24
Sheards Mill Bridge.....	6	2023 Safari.....	24

The **NSPCB Newsletter** is published quarterly to keep the membership informed of current bridge news and upcoming events.

NSPCB Contacts

Newsletter Editor

Bill Caswell
535 2nd NH Tpke
Hillsboro, NH 03244-4601
WSCaswell@yahoo.com

Corresponding Secretary

Robert Watts
126 Merrimac St. Unit 21
Newburyport, MA 01950
508-878-7854
bob1.watts@me.com

Membership Dues and Address Changes

Jenn Caswell
Membership Chair
535 2nd NH Tpke
Hillsboro, NH 03244-4601
nspcb@yahoo.com

Topics Back Issues

Contact Bill Caswell at the address above

Treasurer

Gloria Smedley
1143 Sage Drive
York, PA 17408

Next Newsletter Deadline

The next *Newsletter* is scheduled to be mailed in early **June**, therefore, anyone wishing to submit articles should send them by **May 15, 2023**. Articles and photos can be emailed to nspcb@yahoo.com or mailed to Bill Caswell at the address above.

We appreciate any information sent in even if we cannot ultimately use it in the *Newsletter*.

NSPCB Website

www.coveredbridgesociety.org

Welcome New Members

John Boodey, Rochester, New Hampshire
Daniel Brojakowski, Elmira, New York
Melody Beth Brown & Paul F. Limmer, Sudbury, Vermont
Jody Hulber, Coopersburg, Pennsylvania
Gary M. Marcoux, Methuen, Massachusetts
David Markwood, East Randolph, Vermont
Maura B. Sindel, Kihei, Hawai'i
Brian and Barb Weir, Swarthmore, Pennsylvania

Welcome New Life Members

#211 – Miles Jenness, Huntington, Vermont
#212 – Mohamad Hussein, Oviedo, Florida

2023 NSPCB Meetings & Events

All meetings begin at **1:00 PM** unless otherwise noted. If you plan to attend a meeting, please check the NSPCB website (www.coveredbridgesociety.org) or contact Bill Caswell at nspcb@yahoo.com a couple days before the event to inquire if it has been necessary to make any last minute adjustments to the published schedule.

Sunday, March 26 – Horace Chase Masonic Lodge, Boscawen, New Hampshire. (In-person & virtual. Email Bill Caswell if you would like a Zoom link to the meeting.)

Sunday, April 23 – Custom House Maritime Museum, 25 Water Street, Newburyport, Massachusetts.

Sunday, June 25 – Contoocook Covered Bridge, Contoocook, New Hampshire. Bring your own chairs.

Sunday, July 23 – TBD

Sunday, August 27 – Annual picnic at Beaver Meadow Village at the end of Waumbec St., Concord, NH. The cookout is at noon and the meeting at 1 pm.

September 23 – 25 – Joint Safari of covered bridges in northern Vermont with the Theodore Burr Covered Bridge Society of Pennsylvania. For details, see <http://www.tbcbpsa.com/safari.htm>

late October – NSPCB Annual Meeting and Dinner. Date & Location TBD.

President's Message

I hope that this message finds you healthy and well. As I write it on a cold February morning, I know that by the time it gets to you, Spring will be on the way.

Our plans for a fall tour have taken a change of course. As much as Jenn and I wanted to share our love of the covered bridges in Georgia and Alabama with all of you, concerns about our own availability to attend the tour in September prompted us to consider other alternatives. With the Theodore Burr Covered Bridge Society of Pennsylvania's safari planned for northern Vermont in September, we saw an opportunity to plan a joint tour with them. Officers of both organizations agreed so we are moving forward with that plan.

A Georgia-Alabama tour is still on the agenda, but probably not until we retire when we no longer need to squeeze these events in around work schedules and other commitments. We would like to thank Kathy Tilley and Rachel Crumbley from Visit LaGrange and Katie Gobbi, Community Development Director for the City of Euharlee, Georgia for taking the time to visit with us in December. We look forward to working with those organizations when we are able to host this tour.



Montgomery Bridge, Waterville, Lamoille County, Vermont

We are investigating a new mailing process which could save the Society \$275/year in postage fees. Unfortunately, by using the postal service's automated labeling service, we will no longer have the ability to customize the labels to include your membership expiration date. In short, if you have a renewal notice included within a *Newsletter*, (not to be confused with the gift membership forms sent near the end of the year) your membership is due to expire on June 30th. If you do not have that insert, you are all set. There are occasions where we receive more than one payment from an individual during a year so some of you are already paid ahead a year or two. We will continue looking for a new way to provide you with better information about your membership. The new mailing process may start with the Summer or Fall issues.

As you enjoy this quarter's *Topics*, note the photos of Oregon bridges that Scott Wagner has selected to include. When the Covered Bridge Society of Oregon (CBSO) disbanded a couple years ago, their collection of photographs was divided between the NSPCB and Oregon State Library. We are very grateful to Jerry Russell, the CBSO's president at the time, for taking the time to catalog all the photos and provide them too us. Jerry also included many photos from his and his parent's personal collections. This was a substantial enhancement to the Oregon portion of the NSPCB Archives.

We have been exploring different avenues to introduce new people to our organization and our mission to help preserve our historic covered bridges. In 2021, we had the opportunity to offer technical assistance to sculptor Jeffrey Briggs as he designed a sculpture of Timothy Palmer, the builder of America's earliest documented covered bridge in Philadelphia, Pennsylvania. Bob Watts has arranged for our April meeting to be at the Custom House Maritime Museum in Newburyport, Massachusetts, where we will be able to see the sculpture and others that Briggs has created.

Please continue to keep us informed of covered bridge news so we can share it with the rest of our members. We look forward to seeing you at our meetings and events in 2023.

Bill Caswell

Amazon Smile program ending

Amazon has notified us that their program for donating portions of product sales to non-profit organizations will end in February. Your support of the Amazon Smile program over the past few years has resulted in a total of \$792.45 in donations to the NSPCB. Thank you!

Support
National Society For The
Preservation Of Covered
Bridges.

When you shop at smile.amazon.com,
Amazon donates.

[Go to smile.amazon.com](https://smile.amazon.com)

Sanborn Bridge Update

[The NSPCB would like to thank Nicole Gratton, Planning Director for the Town of Lyndon, Vermont for providing this update on fundraising for the Sanborn Bridge, VT/45-03-05.]

Winter may seem like a time of dormancy, but in the Town of Lyndon Planning Office, we are very busy setting the stage for springtime work at the Sanborn Covered Bridge site.

From a funding standpoint, the project met its capital campaign goal of raising \$100,000. This was accomplished with the support from NSPCB's promise of \$25,000 if the local community could raise \$25,000. The community met this challenge in less than 45 days! Large donations of \$10,000 each from Vanguard Charitables in honor of Sarah Lafferty, The White Market, Community National Bank, Lyndon Chamber of Commerce and an anonymous donor brought the total in giving up to \$100,000. Thank you so much to everyone who contributed toward the Sanborn Covered Bridge Capital Campaign! And a huge thank you to Catamount Film & Arts for being the fiscal sponsor!



The Sanborn CB project has also become the recipient of a small matching grant from the Vermont Division of Historic Preservation. The funding from VDHP and the Town will support the rebuilding of the portals of the bridge, giving a fresh and enhanced face to the two gable sides.

The project continues to seek and secure funding for the overall revitalization of the bridge. An application is pending with the Vermont Transportation Alternatives Program. It is hoped that this funding will help with the abutment reconstruction and raising of the bridge higher on the riverbank. The project will be exploring financial support from USDA Community Facilities and Vermont Outdoor Recreation Economic Collaborative this spring and summer.

Beyond just the bridge itself, work is progressing around the creation of a riverfront park space on the south side of the Sanborn CB. The Town of Lyndon is partnering with the East Burke School to install riparian plantings and edible landscapes. The Town is partnering with Northern Forest Canoe Trail to install stone steps down to the river for safe access. The Town is working with local artist Martin McGowan of West Burke to install a sculpture in the park space that will communicate with the bridge and draw people into the site. The sculptural art project is made possible with support from Vermont Arts Council, Vermont Community Foundation, Vermont Humanities, and the Satellite Gallery of Lyndon.

In less glamorous news, the project is in the process of selecting an engineering firm to conduct all the predevelopment and engineering work required before construction. This is made possible with funding from a USDA Rural Business Development Grant and an amazing \$50,000 donation from Barbara Norris Allen, the former owner of Bag Balm. These two funding sources are providing all that is needed to take the bridge from where it is and prepare it for construction (and it requires a lot of behind-the-scenes work!).

I will close by saying that this project takes the collective efforts and support from so many individuals and organizations. I am so thankful for all the support the project has received so far. I look forward to continuing the partnerships that have formed around this project and to see this bridge and space transform into a community node where people can enjoy history, art, outdoor recreation, and social connection.

*Donations to the Sanborn Covered Bridge can be made online by credit card at
<https://tickets.catamountarts.org/donations/sanborn%20covered%20bridge>*

If you wish to donate by check, and for large donations, please write Sanborn on the memo line of your check and send it to: Catamount Film and Arts, PO Box 324, St. Johnsbury, VT 05819

King Bridge, Troup County, Georgia

The Summer 2022 *Newsletter*, page 8, contained a summary of the bridge’s interesting history up to this point. It was known as the Wehadkee Creek Bridge when it was initially built in 1890 at a location west of LaGrange near the Alabama border which is presently under West Point Lake. The bridge was relocated about 30 miles to Callaway Gardens in 1965 when the area was to be flooded.



At Callaway Gardens, the bridge was open to visitors for many years. Later, it was relocated to a nearby field to make room for construction of the John A. Sibley Horticultural Center. At that point, it was no longer accessible to the public. Although there were reports of it being dismantled and put into storage, the bridge remained intact in the field until it was moved back to LaGrange. Even though it was unmaintained for many years, the skeleton of the bridge was still in good condition.

In February 2022, the structure was dismantled and moved back to Troup County. The relocation was made possible by a number of generous contributions. Fran Rogers, the Chairman of the Board of Trustees of the Ida Cason Callaway Foundation (which owns Callaway Gardens) gave the bridge back to Troup County. The Troup County Commission Chairman, Patrick Crews, supported the bridge’s use for this project and gave it to the City of LaGrange. Also, the Callaway Foundation, Inc. of LaGrange (a different branch of the same Callaway family) provided a grant that helped move the bridge.



On December 8th, Bill & Jenn Caswell met with Kathy Tilley and Rachel Crumbley from Visit LaGrange who took them out to see the bridge at its new location in the Mulberry Street Cemetery behind the grave of noted bridge builder Horace King.

Only about half of the original bridge was relocated to Callaway Gardens. When moved to LaGrange, the walls were separated from the floor and otherwise moved intact. It was reconstructed on top of a steel base with a new roof and siding added. It will be incorporated into “The Thread”, a planned 30-mile-long recreational trail through the city which started construction in 2017. While visiting the bridge, Bill & Jenn noticed floorboards with treenail (trunnel) holes in them. Were they once part of the upper or lower chord of the half of the bridge not rebuilt in 1965?



Work will continue to incorporate the bridge into LaGrange’s trail network. They are also developing interpretive panels for the



various parts of the cemetery. In addition to the bridge and graves of Horace King and his son Marshal, the cemetery contains graves of 350 Confederate soldiers. LaGrange was once the site of multiple hospitals and many of the soldiers buried there were patients who were transported to LaGrange for treatment of battle injuries during the Civil War.

A large open area adjacent to the cemetery was discovered to contain 425 unmarked graves which are thought to be mostly African Americans. Research is continuing to learn more about the people buried there.

The photo of the bridge at its original location is in Elna Johnson’s collection. Rachel Crumbley and Jenn Caswell provided the other photos. Thanks to Kathy and Rachel for their help preparing this article.

Surprise! PennDOT repairing Sheard's Mill Bridge

by Joe Ferry

[Editor's note: This article about the Sheard's Mill Bridge in Bucks County, Pennsylvania, PA/38-09-06, first appeared in the Bucks County Herald newspaper — www.buckscountyherald.com — on February 9, 2023. It is being reprinted with permission. Photo by Joe Ferry.]

For almost a year, residents living near the Sheard's Mill Covered Bridge on the border of East Rockhill and Haycock townships lobbied PennDOT to make repairs on the 150-year-old gem that spans the Tohickon Creek. Among other notable deficiencies, the wooden decking was "like driving on railroad tracks," said Petrona Charles.

In December, PennDOT officials acknowledged the need for some upgrades but said there were no funds in the budget to get the work done on a bridge that was essentially structurally sound.

And then seemingly out of nowhere, word came early last month that repairs would begin Jan. 30 and take about a month on the 15-foot-wide bridge that carries an average of 147 vehicles per day.

"We were thrilled," said Charles, an East Rockhill resident. "It just proves that people working together can accomplish great things."

For that, much of the credit goes to Bernie Dubois, who spearheaded the effort to raise awareness about the need for repairs on what she referred to as "our" bridge. Dubois rallied the community to discuss what work needed to be done and spent hours crafting detailed emails and making calls to PennDOT. She also met with bridge inspectors from PennDOT, "who seemed knowledgeable about the special restoration needs of our covered bridge," she said.

Dubois also enlisted the aid of the Bucks County Covered Bridge Society and Visit Bucks County, the county's tourism agency, to hammer home the need for repairs. In late fall, she convinced her U.S. Rep. Brian Fitzpatrick and state Rep. Craig Staats to join the battle by writing letters of support.

After confirming the bridge's condition with a personal visit, Staats took his concerns to officials in PennDOT's District 6, which is responsible for Bucks County.

Still, the agency wouldn't budge.

So imagine DuBois' surprise when PennDOT let her know the work would begin at the end of January. She still isn't sure what prompted the state's change of heart, although hearing from a congressman and a state representative may have swayed the thinking a bit.

"As with any large organization, standard answers are sometimes changed at later dates to reflect the real circumstances because, as we know, circumstances change," DuBois said. "However it occurred, we are glad that the funding was made available to keep this bridge serviceable to the community as a valuable piece of transportation as well as a treasured historic Bucks County bridge."

The most pressing need was replacing all the deck boards and orienting them to run 130-foot length of the bridge rather than across the span. Charles said that arrangement should stand up better to vehicular traffic.

The roof, which will likely require the services of a contractor, may be addressed at a later date, said PennDOT spokesperson Robyn Briggs.

Of the 12 covered bridges remaining in Bucks County, three are owned and maintained by PennDOT — Van Sant in Tinicum and Mood's in East Rockhill are the others. Bucks County is responsible for the other nine.

East Rockhill Board of Supervisors Chairman Dave Nyman said he appreciated necessary maintenance that is being done but said "making arrangements to have its ownership turned over to the county would be a longer term, more effective means of taking care of it."



News of Members

Vice President Bob Watts

On January 22nd, Bob Watts, one of the NSPCB's vice presidents, offered a presentation at the Custom House Maritime Museum in Newburyport, Massachusetts. This will be the location of our April meeting during the "Legendary Newburyporters" exhibit. The first half of the presentation was about "Legendary Newburyporter" and noted bridge builder Timothy Palmer. That was followed by images of some of Bob's favorite covered bridges around New England.

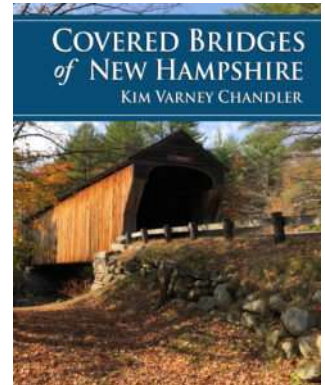


Mary Hollabaugh Diehl

On December 14, 2022, the *Butler Bulletin* announced that NSPCB member Mary Diehl has been appointed to the voluntary role of DeKalb County Historian by the Indiana Historical Society and Indiana Historical Bureau. Mary has been integral to the preservation of DeKalb County's Spencerville Bridge (IN/14-17-01) by helping to raise funds for repairs and obtaining fire retardant for the structure.

Covered Bridges of New Hampshire

Covered Bridges of New Hampshire, authored by life member Kim Varney Chandler, has been featured in newspaper articles throughout New Hampshire and a segment on WMUR-TV's *New Hampshire Chronicle* program. Kim has been making presentations around the state to promote the book and share her research. Kim has also prepared a number of podcasts on a variety of covered bridge topics. More details about the book and links to the podcasts can be found on the book's website at <https://coveredbridgesnh.com/>. Copies can be ordered on the website.



2024 NSPCB Calendar Photos

Thank you to all who submitted photos for the 2024 calendar. The Calendar Committee will be reviewing them and deciding which ones to include in next year's calendar. Watch for an update in the Summer *Newsletter*.

Join or Renew Online with PayPal	
US Membership with Automatic Annual Renewals	PayPal Subscribe
	PayPal CREDIT Subscribe
	Debit or Credit Card <small>Powered by PayPal</small>
Single Year Membership <small>For gift memberships, add the recipients name and address in the Comments box.</small>	Membership Individual/Family US \$21.00 USD Comments <input type="text"/> Add to Cart View Cart

Automatic Renewals Now Available

Thanks to a suggestion from a member, we are now able to offer automatic renewals for members who choose to pay their annual dues online. This is a convenient option for those who would like one less thing to remember to do each year.

National Society for the Preservation of Covered Bridges | Logout | Profile

Bridge Detail

WGN: 17-35-05

17-35-05 Grange City
Grange City, Fleming County, Kentucky
Latitude, longitude: 38.2548, -83.6532
This bridge is also known by these names:
Hillsboro
Last visit: 5/1/2017

Bridge Facts

Body of Water	Fox Creek
Num Spans	1
Length	80
Built	1867
Rebuilt	0
Truss	Multiple King
Private	no
Parking	
Site description	Lost
Reason	

Nearby Bridges

WGN	Bridge Name	Distance	Direction	Drive Dist	Drive Time
17-35-04	Ringos Mill	3	E	6.4 mi	8 mins
17-35-06	Goddard	8	N	11.8 mi	16 mins
17-101-01	Johnson Creek	24	NW	30.9 mi	41 mins
17-68-03	Cabin Creek	25	N	33.2 mi	46 mins

Events

Edit	Date	Description
<input type="button" value="Add"/>		

Your Visits

Edit / Del	Visit Date	Description
<input type="button" value="Edit"/> <input type="button" value="Del"/>	2017-05-01	null
<input type="button" value="Add"/>		

Copyright 2019, National Society for the Preservation of Covered Bridges

NSPCB Bridge Database Website and Phone App

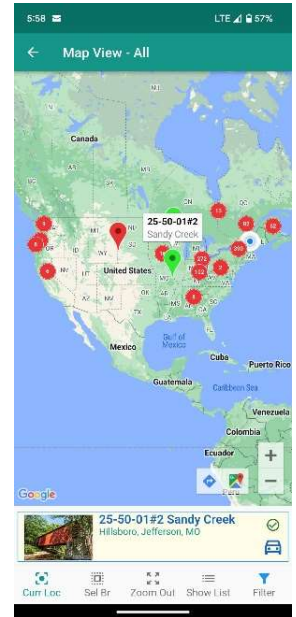
Have you been looking for a way to quickly identify covered bridges in a particular area, keep of track of bridges you've visited, plan to visit, or simply have an interest in? Maybe just enjoy a slide show of covered bridge photos?

Those are just a few highlights of the NSPCB Covered Bridge Database. If you haven't already done so, please visit www.abhdemo.com and register for access to the system. You will need a valid email address to register and then follow the instructions in the email to use the site.

When you sign in for the first time, click "Contact" at the lower right. Identify yourself as an NSPCB member and the site administrators will elevate your account to "Member" status. The site is open to the public, but some features, such as trip planning, are restricted to members only. Upgrading to member status may take a day or two, it is not an automated process.

The companion phone app is available in both Android and Apple iOS versions. The phone app has the ability to locate covered bridges near your location and sync the mobile device with updated information from the website.

If there are additional features you would like to see, please let us know.

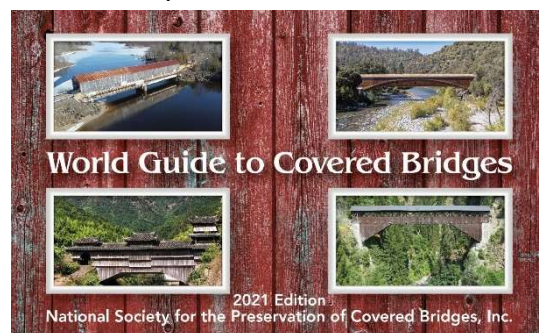


Books available from the Society

These books can be purchased through the NSPCB website (coveredbridgesociety.org) or by sending a check or money order made out to **NSPCB** to Jenn Caswell, 535 2nd NH Tpke, Hillsboro, NH 03244.

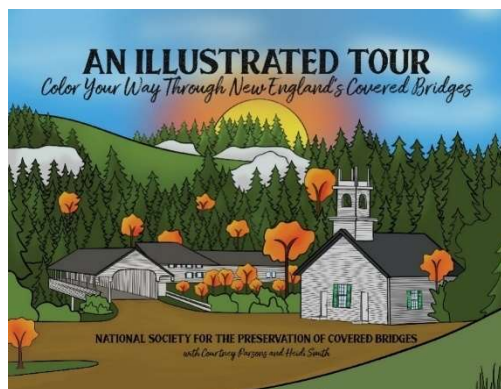
World Guide to Covered Bridges

Copies of the new *World Guide to Covered Bridges* can be obtained for \$19 per copy for media mail shipping or \$23 each for priority mail shipping to US addresses. Due to the high international shipping rates, a copy mailed to Canada will cost \$37 total. For rates to other countries, please contact us first.



Covered Bridge Coloring Book

Color Your Way Through New England's Covered Bridges is now available. Each of the twenty New England covered bridges featured has a photo of the bridge, some historical notes about it and, on the facing page, an outline to be colored. The book also includes some introductory material about covered bridges in general and a page about the NSPCB. \$19.95.



Updates to the 2021 World Guide to Covered Bridges

For a complete list of changes, please visit the website at www.coveredbridgesociety.org and click on the World Guide link. Thanks to Dan Brock for providing most of this quarter's updates and many more minor adjustments to European entries which are not mentioned here.

Page 135, Washington County, Pennsylvania

Correct coordinates of the Pine Bank Bridge, **PA/38-63-35**, to **N40° 17.290' W080° 29.418'**

Page 163, Columbia-Shuswap Region, British Columbia

Add directions for the Kicking Horse Pedestrian Bridge, BC/52-08-02, in Golden

0.45 miles north of jct 10th Ave. S. (Highway 95) and 12th St. S. in Golden, then left on 9th Ave. N. and next left into a parking area. Park and walk to the bridge.

Page 163, Okanagan-Similkameen Region, British Columbia

Correct length of the Ashnola River Road or Red Bridge, BC/52-21-02, to **325'**.

Page 215, Baden-Württemberg, Germany, update directions and add coordinates of DE-01-40.

At Göppingen between Metzgerstraße and Nikolaus-Lenau-Straße, southwest of Route 297 (Stuttgarterstraße). N48° 42.249' E009° 38.403'

Page 216, Baden-Württemberg, Germany, add name, truss and construction date.

DE-01-52 Bonndorf im Schwarz- Wutach River **Kanadiersteg 1 19m, 61' 1976 low Multiple King**

Page 217, Baden-Württemberg, Germany, correct coordinates, add truss type.

DE-01-58 Kohlwald **Multiple King N47° 54.096', E008° 17.472'**

Page 218, Baden-Württemberg, Germany, delete DE-01-65, bridge burned April 21, 2021.

Page 219, Baden-Württemberg, Germany, correct river name and add details to DE-01-73.

DE-01-73 Donauschingen **Brigach River, railroad and road Siedlersteg 4 83m, 272' 1987 inverted Multiple King?**

Page 220, Baden-Württemberg, Germany, change river name of DE-01-79 to **Lein River**.

Page 227, Bayern (Bavaria), Germany, correct river name and add details to DE-02-36.

DE-02-36 Bayreuth **Mistel Brook 1 35m, 114' 1984**

Page 227, Bayern (Bavaria), Germany, update river name of DE-02-39 to **Eittinger Fehlbach (Saubach) River**.

Page 232, Sachsen (Saxony), Germany, add bridge name to DE-13-01 – **Hennersdorfer**.

Page 236, Trentino-Alto Adige/Südtirol Region, South Tyrol, update coordinates of IT-17-01-13 to **N46° 48.819' E011° 42.660'**

Page 238, Košice Region of Slovakia, note updates to SK-02-01.

SK-02-01 Kluknava Hornád River **Štefanská Huta 31m, 105' 1831 Queen 1.9 km east of jct 3420 on 547 (near Kluknava), then 450 m left on 3280, then 150 m left on unnamed road. N48° 54.994' E020° 57.115'**

Page 257, canton of Berne, Switzerland, add CH-06-121

Schwarzenburg / Rüeggisberg Schwarzwasser Steiglenau 1 27m, 88' 2014 Pratt On a hiking trail in Gantrisch Nature Park. The ½ mile long trail winds through a steep gorge between two roads, Steiglen on the Rüeggisberg side and Buttnigenbad on the Schwarzenburg side. N46° 50.133' E007° 22.471'

Page 267, canton of St. Gallen, Switzerland, correct coordinates of CH-15-24 to

N46° 56.983' E009° 29.087'

Upcoming Covered Bridge Meetings & Events

For more information on these events from other bridge societies, visit their websites.

Covered Bridges Conservation Association of New Brunswick, Canada (CBCANB)

..... www.facebook.com/groups/CoveredBridgesConservationAssociationNB/

Indiana Covered Bridge Society (ICBS) www.indianacoveredbridges.org/

New York State Covered Bridge Society (NYSCBS) www.nycoveredbridges.org/

Ohio Historic Bridge Association (OHBA)..... oldohiobridges.com/new/

The Theodore Burr Covered Bridge Society of Pennsylvania (TBCBSP) www.tbcbspa.com/

Vermont Covered Bridge Society (VCBS) www.vermontbridges.org/

Events could be cancelled or rescheduled on short notice. If you plan to attend, please confirm that the event is actually taking place with the group hosting it.

<u>March</u>	<p>Sunday, 5th – 2:00 PM, TBCBSP Monthly Meeting at St. Paul Episcopal Church, 340 Locust St., Columbia, Pennsylvania.</p> <p>Sunday, 19th – 1:30 PM, OHBA Meeting, Ohio History Connection Auditorium, 800 E. 17th Ave., Exit 111 off of Route 71.</p>
<u>April</u>	<p>Sunday, 2nd – 2:00 PM, TBCBSP Monthly Meeting at St. Paul Episcopal Church, 340 Locust St., Columbia, Pennsylvania.</p> <p>Sunday, 16th – NYSCBS Annual Dinner at Spaghetti Warehouse, 689 N. Clinton St., Syracuse, New York. Doors open at 11:00 AM, Lunch at noon.</p> <p>22 & 23 – ICBS Spring Tour in Jennings and Ripley Counties.</p>
<u>May</u>	<p>Saturday, 7th – 11:30 AM to 3:30 PM, TBCBSP Anniversary Dinner at Yoder's Restaurant, 14 South Tower Road, New Holland, Lancaster County, Pennsylvania. Note that this date may change after we go to press. Please confirm with the TBCBSP if you plan to attend.</p> <p>Saturday, 20th – OHBA Spring Tour, Location TBD.</p> <p>Saturday, 20th – TBCBSP mini-safari to bridges in Juniata and Snyder counties.</p>
<u>June</u>	<p>Saturday, 10th – 10:00 AM to 2:00 PM, VCBS Spring Meeting, West Arlington, Vermont.</p> <p>Sunday, 11th – 2:00 PM, TBCBSP Monthly Meeting at St. Paul Episcopal Church, 340 Locust St., Columbia, Pennsylvania.</p> <p>Sunday, 11th – 1:00 PM, NYSCBS meeting, Canal Town Museum – Canastota, New York</p>
<u>July</u>	<p>Saturday, 8th – TBCBSP Fundraiser Dinner at Hoss's Steak & Sea House, 100 W. Airport Rd., Lititz, Pennsylvania. Lunch at noon followed by monthly Business Meeting. A percentage of proceeds will be donated to the TBCBSP Preservation Fund.</p> <p>Sunday, 9th – 1:00 PM, NYSCBS meeting, Cannon Covered Bridge, Bennington, New York</p> <p>22 & 23 – ICBS Summer Tour in Jackson and Lawrence Counties.</p> <p>Sunday, 16th – 12:00 noon, OHBA Summer Picnic, Salt Creek Covered Bridge, Arch Hill Road, east of Zanesville, Ohio.</p>
<u>August</u>	<p>Sunday, 6th – 2:00 PM, TBCBSP Monthly Meeting at St. Paul Episcopal Church, 340 Locust St., Columbia, Pennsylvania.</p> <p>12-13 – NYSCBS Safari, Columbia County, Pennsylvania</p>
<u>September</u>	<p>Sunday, 10th – 1:00 PM, NYSCBS virtual meeting.</p> <p>Sunday, 6th – Noon, TBCBSP Annual Picnic and meeting at Poole Forge Bridge.</p> <p>23 – 25 – TBCBSP Tour of northern Vermont.</p>

Covered Bridge News California

Honey Run Bridge, Butte County – CA/05-04-01x

Butte County Supervisors are considering a request for a \$2.5 million loan to the Honey Run Covered Bridge Association (HRBA) towards construction of a replica of the covered bridge lost to the Camp Fire on November 8, 2018. The money would come from funds received by the county from a settlement with Pacific Gas & Electric. Phase I (\$1.2 million: foundations, abutments, columns, slope protection) was completed in November 2020. The Association requested the loan to help fund Phases II (deck and trusses) and III (roof and siding). A final vote on the loan from the Butte County Board of Supervisors is expected in late March. If approved, the HRBA will sign a contract with Q&D Construction, a Nevada-based general contractor. Construction is scheduled to begin July 7 after lumber from Oregon arrives on site. The HRBA is a 501(c)3 non-profit. For more information or to donate, go to <http://www.hrcoveredbridge.org>. *KNVN & KHSL-TV, February 14, 2023 and KRCR-TV, February 15, 2023. Jenn Caswell Photo of the former bridge.*



Knight's Ferry Bridge, Stanislaus County – CA/05-50-01

According to a press release from the U.S. Army Corps of Engineers Sacramento District on December 29th, the Knights Ferry Bridge — the longest covered wooden bridge west of the Mississippi River — was being closed for repairs. A structural analysis determined that significant wood deterioration has compromised the stability of the 330-foot-long Howe truss structure over Stanislaus River. The Army Corps started limiting the number of people on the bridge at any time last July and has now completely closed the bridge. They are consulting with the California State Historic Preservation Officer to ensure that any work on the bridge does not compromise its National Register of Historic Places status. Knights Ferry was founded by Captain William Knight who was part of John Charles Fremont's Expedition of 1844 to find a more southern crossing of the Rockies and explore the areas south of the Columbia River. Knight operated a ferry used by people traveling to and from nearby gold mines. The last significant repairs and renovation of the bridge occurred in 1989. Updates on bridge repairs will be posted at <https://www.spk.usace.army.mil/Missions/Recreation/Stanislaus-River-Parks/>. *Photo courtesy of Army Corps of Engineers.*



Connecticut

West Cornwall or Hart Bridge, Litchfield County – CT/07-03-02

On December 30th, a truck towing a backhoe on a trailer damaged many of the bridge's roof braces. The Connecticut Department of Transportation closed the 1864 bridge over the Housatonic River until it could be repaired. After a couple weeks, some repairs had been completed and the bridge was opened when crews were not working. The bridge was added to the National Register of Historic Places on December 30, 1975. *WFSB-TV, December 23, 2022, WTNH-TV, January 12, 2023. Photo by David Wray.*



Georgia

Concord Road Bridge, Cobb County – #10-33-02

Even with motion-activated warning signs on both sides of the Concord Road Bridge (also known as the Ruff Mill Bridge or Nickajack Creek Bridge), oversized vehicles continue to hit the protective barriers installed at the bridge. There were two recent incidents on January 20th and February 8th when vehicles struck the headache bar. In each instance, the road was closed for a few hours while the barrier was repaired. As mentioned last quarter, the construction date was listed



as 1872, but recent research indicates that it was actually built in 1891 to replace an earlier one at the location. It was listed on the National Register of Historic Places on November 24, 1980. *News courtesy Cobb County Government Facebook page. Photos by Bill & Jenn Caswell.*

Indiana

Ceylon Bridge, Adams County – IN/14-01-02

The Adams County Parks Board has informed us that they are working with Geneva Proud, a 501(c)3 non-profit, associated with the Geneva Chamber of Commerce, to arrange for some repairs to the covered bridge which was closed to vehicular traffic in 1977 and became part of the Adams County Park system, a part of Limberlost County Park. They would like to:

- Tighten the metal rods of the Howe truss to compensate for wood shrinkage from repairs 10 years ago.
- Paint the exterior of the bridge.
- Repair a floor cross-brace.
- Add fire retardant.
- Add security cameras.
- Informational signage.
- Make the bridge handicap accessible.
- Add public restrooms and playground equipment.

The single-span Howe truss bridge over a channel of the Wabash River was built in the early 1860s. It was added to the National Register of Historic Places on January 25, 2007. *Photos by Bill & Jenn Caswell.*



Spencerville Bridge, DeKalb County – IN/14-17-01

We have learned that a 150th anniversary celebration is being planned for this bridge in September 2023. We will share more details when they become available. The 160-foot-long bridge was built over the St. Joseph River in 1873. It was placed on the National Register of Historic Places on April 2, 1981 and bypassed in 2003. *Photo by Bill & Jenn Caswell.*

Indiana (continued)

Longwood Bridge, Connersville, Fayette County – IN/14-21-01

As noted in the previous *Newsletter*, the single span Burr truss was built by the Kennedy family in 1884. The present project is primarily repairing or replacing components constructed when the bridge was relocated in 1984. The bottom chords added at that time were not as substantial as the ones originally constructed by the Kennedy’s a hundred years earlier and are being replaced. When the bottom chords were removed, more rotted posts than expected were exposed causing the work to take a little longer. The timber framers, Mike Wengler of Timber Frame Reclaim of Oxford, Ohio and Will Truax from New Hampshire, have been visiting other Kennedy family bridges to gather information about their lower chord design so they can accurately replicate that design on this bridge. *Photo by Greg McDuffee, November 23, 2022.*



Cades Mill Bridge, Fountain County – IN/14-23-02

The oldest covered bridge in Indiana still in its original location still needs your help. The Fountain County Art Council Historic Committee continues their efforts to raise funds for repairs to the single-span Howe truss 1854 structure. The Committee will be hosting a benefit dinner on March 12th to help raise money for repairs. The event will include music and a silent auction. *Photo by Greg McDuffee.*

Donation checks should be made out to Western Indiana Community Foundation and sent to them at P.O. Box 75, Covington, IN 47932

Richland Creek or Plummer, Greene County – IN/14-28-01

At the end of January, the Greene County Highway Department announced that the bridge would be closed from February 6th until February 17th for unspecified repairs. *Photo by Bill & Jenn Caswell.*



Rush County Bridges

On December 21st, Indiana Landmarks announced awards totaling more than \$170,000 to save meaningful places throughout the state. One of those awards was for \$1,500 to the Rush County United Fund “to share the history and preservation of five historic covered bridges through signage and a printed brochure, and through a video interview with a descendant of the Kennedy family who built the bridges.” In September 2015, the NSPCB joined the Indiana Covered Bridge Society for a joint tour which included the Rush County bridges. At the Offutt’s Ford Bridge (WG #IN/14-70-02), Andy Rebman, president of the Indiana Covered Bridge Society and Bill Caswell had the honor of holding a 42 inch long hand carved model built by noted bridge builder Emmett Kennedy in

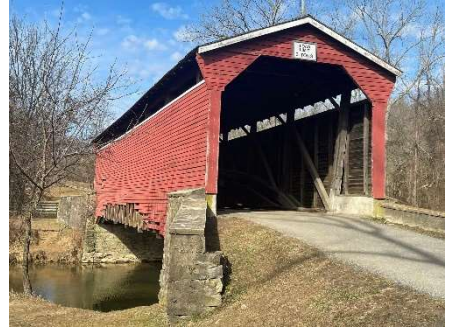


1872. They were joined by Becky Webb, a descendant of Kennedy.

Maryland

Foxcatcher Farms Bridge, Cecil County - MD/20-07-02

On February 15th, member Michael Rudnick visited covered bridges in Maryland and shared these photos of the numerous missing side boards at this bridge. The photo on the right shows damage from the remnants of tropical storm Ida on September 1, 2021. The cause of the missing siding on the other side is not known. The single-span bridge over Big Elk Creek was built by Ferdinand Wood in 1860.



Roddy Road Bridge, Frederick County – MD/20-10-02#2

Radio station WFMD reported that the Roddy Road Bridge over Owens Creek was closed on February 8th after the headache bar south of the span was damaged by an oversized vehicle. The Frederick County Division of Public Works said that crews repaired the security device and reopened the bridge on the 10th. The covered bridge was not damaged. *Photo by Bill & Jenn Caswell.*



New Hampshire

Whittier or Bearcamp Bridge, Ossipee, Carroll County – NH/29-02-08

In the previous issue, we noted that the bridge was moved back over the Bearcamp River after sitting on dry land since 2007. Ken Parnell offered these photos of the completed project in late November. The Paddleford truss structure was probably built in 1870 to replace an earlier bridge lost during the great freshet of 1869.



New Hampshire (continued)

Mechanic Street Bridge, Lancaster, Coös County – NH/29-04-06

On July 11, 2022, the single-span 1862 Paddleford truss bridge over the Israel River was damaged by a negligent driver of a box truck. The damage included roof braces, tie-beams in the roof support system, both portals, vertical truss posts and the Fire-Wire fire detection system. At the time, Arnold M. Grāton Associates performed some repairs so that the bridge could be re-opened to traffic. In January, they returned to complete the repair work and were also asked to replace the decking. The work was expected to be completed around the end of February. *Manchester Union Leader, January 26, 2023. Project updates and photos courtesy Arnold M. Grāton Associates.*



New York

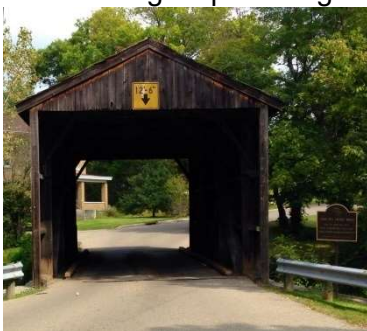
Cannon Bridge, Wyoming County – NY/32-61-07#2

The Historic Schoellkopf Road Bridge Rehabilitation Project in Wyoming County was one of two spans statewide to receive a 2022 New York State Historic Preservation Award for Excellence in Historic Preservation Consultation. The \$2.5 million effort constructed a covered bridge across Cayuga Creek in the Town of Bennington, where the community's first covered bridge was built in 1845. *Buffalo News, December 28, 2022. Photo by Karl Young.*



Ohio

Jediah Hill or Groff Mill, Hamilton County – OH/35-31-01



The single-span bridge over West Fork, Mill Creek was struck by a township snowplow with its bed up damaging a portal and some roof braces. It was also damaged last spring when two vehicles tried to cross simultaneously. That damage bent a vertical of the queen post truss. The bridge was originally built in 1850. In 1956, a major rehab replaced much material except the queen post truss. Steel beams were added to support the main traffic loads. Then in 1983, another project replaced the steel beams with prestressed concrete box beams. Township and county officials have not yet determined what action they will take for repairing the bridge. It was added to the National Register of Historic Places on March 28, 1973. *Information from Doug Miller, president of the Ohio Historic Bridge Association. Photo by Gloria Smedley.*

Ohio (continued)

Spellacy Bridge, Holmes County

According to a post on The Lost Horizons Family Campground’s Facebook page on February 9th, materials for the new covered bridge were being delivered to the site. The campground is adjacent to the bridge site. Kokosing Construction was selected for the \$9.5 million project on Wally Road about six miles south of Loudonville. The old bridge was removed last September and the goal is to complete the project by mid-September 2023. In addition to the new bridge, organizers of the Mohican Greenway Corridor project are planning improvements to the Mohican Valley Trail. They intend to add a trail running north from the new covered bridge to the Ashland and Holmes County line. Progress on the bridge project can be viewed on a live camera at the site – <https://m.twitch.tv/holmescountyengineer>.



Additional details from Ashland Source, December 22, 2022. Rendering provided by Smolen Engineering.



McColly Bridge, Logan County – OH/35-46-01

On February 5th, WPKO-FM reported that Logan County crews were closing the bridge during their working hours of the week of February 6-10. A similar notice was posted on February 13th for that week. Doug Miller, president of the Ohio Historic Bridge Association checked with the County Engineer and learned that it was for routine maintenance of the structure, not repairs resulting from any damage. The single-span Howe truss structure was built over the Great Miami River in 1876. It was added to the National Register of Historic Places on May 28, 1975. Photo by Gloria Smedley.

Knowlton or Long Bridge, Monroe County – OH/35-56-18

We are continuing to follow this project although not much has happened this quarter. The work to



rebuild the two collapsed spans is expected to get underway in July. For those not familiar with this saga, the three-span structure over the Little Muskingum River was built in 1887. One of those

“Covered bridges are unique, and we need to do everything that we can to protect and preserve them. Of all the covered bridges that I’ve done in the last 30 years, this one has become the most unique.”

Tony Durm, Ohio DOT Engineer

spans collapsed on July 5, 2019 while the county was preparing plans to repair it. On June 17, 2020, a second span collapsed leaving one remaining intact. The county has harvested timber for the project from county lands and is preparing it now. The Righter Company from Columbus, Ohio prepared the design plans. Photo by Terry Miller.

NSPCB Facebook Page

To help spread the word about our mission, the National Society for the Preservation of Covered Bridges, Inc. has a Facebook page. The page is used for sharing current bridge related news and Society meeting information. If you use Facebook, visit us at <http://www.facebook.com/nspcb>. “Like” our page and share it with your friends.



Ohio (continued)

Mary Ruffner Bridge, Perry County – OH/35-64-84

In the Winter *Newsletter*, page 24, we noted the change of ownership of the bridge and a number of issues needing attention. The owner, Tim Koenig, has explored a number of options to help with funding



the repairs, but this is typically difficult with privately owned structures. We contacted Mr. Koenig for an update, and he informed us that a contractor will be visiting the bridge in March to review the work it needs and help him prioritize tasks. He would appreciate any information that you might be able to offer to help him in his quest to repair the bridge. He can be reached by email at tim@millersportcoffee.com. Please also inform us of any ideas for preserving this historic structure.



Right Photo Courtesy Fairfield County Parks, Left Photo Courtesy Tim Koenig.

Brubaker Bridge, Preble County – OH/35-68-06

In the Fall 2022 *Newsletter*, page 13, we reported on the damage incurred when a tractor-trailer attempted to cross the bridge.



Doug Miller, president of the Ohio Historic Bridge Association, informed us that a pre-bid meeting was held on February 8th for potential contractors interested in repairing the damage. We will keep you posted of future developments. The single-span Childs truss bridge was



built over Sam's Run by Everett S. Sherman in 1887. It was added to the National Register of Historic Places on June 11, 1975. *Photos courtesy Preble County Engineer's Office.*

Hills or Hildreth Bridge, Washington County – OH/35-84-24

In the Spring 2022 *Newsletter*, page 13, we reported that the Washington County Board of County Commissioners advertised for bids to repair this bridge. Unfortunately, at the time, the low bidder withdrew their bid. Mike Killilea of The Righter Company has informed us that they will begin working on this bridge in March. The project includes truss rehabilitation, replacement of damaged thrust blocks, new siding, new roofing, new flooring, fire retardant, and wood stain. The project is expected to be completed around the beginning of December 2023. The single-span Howe truss bridge was built over Little Muskingum River in 1878. The bridge was added to the National Register of Historic Places on February 8, 1978. Mike included this photo of the bridge.



Oregon

McKee Bridge, Jackson County – OR/37-15-06

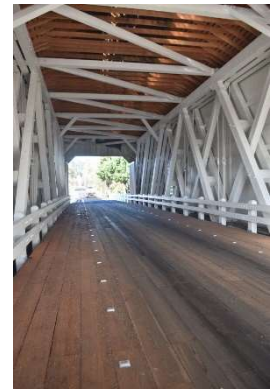


In early December, members of the McKee Bridge Historical Society spent the better part of two weeks decorating this historical landmark over the Applegate River for the 4th Annual Christmas on a Covered Bridge event. The event is primarily a fundraiser to help maintain the bridge. This year, a portion of the proceeds will also be used towards two scholarships being offered to graduating high school seniors in Jackson or Josephine County. The single-span Howe truss structure was built in 1917. *KOBI-TV, December 17, 2022. Photo posted on McKee Bridge Historical Society Facebook page.*



Shimanek Bridge, Linn County, Oregon – OR/37-22-03#2

After following the progress of the extensive repairs to this bridge throughout last year, we have these photos of the completed work taken on December 2nd shared with us by Jerry Russell. For details on the project, see the full-page article on page 9 of the Winter 2022/2023 *Newsletter*. The single-span Howe truss bridge over Thomas Creek was built in 1966.



Pennsylvania

Rudolph and Arthur Bridge, Chester County – PA/38-15-01

In the Winter 2021/2022 *Newsletter*, page 28, we reported that this bridge constructed in 1880 over Big Elk Creek was swept away by flooding associated with tropical storm Ida on September 1, 2021. Jim & Gloria Smedley have informed us that the county is planning to rebuild, possibly in 2024. The photo, from the NSPCB Archives, was taken by Herbert Richter on January 11, 1959.



Geiger's Bridge, Lehigh County – PA/38-39-05



In the Spring 2022 *Newsletter*, page 15, we reported that work was getting underway at this bridge. The work was to include replacing the flooring, installing a new slate roof and siding, replacing metal rods, applying fire retardant and paint. The Winter 2023 issue of Pennsylvania Crossings, the newsletter of the Theodore Burr Covered Bridge Society of Pennsylvania, reported that the work is now complete. The bridge was built in 1860 in the North Whitehall Township section of the Trexler Nature Preserve and is on the National Register of Historic Places. *Photo by Jenn Caswell.*

Pennsylvania (continued)

Rebuck or Himmel's Church Bridge, Northumberland County – PA/38-49-06#2

The bridge in Washington Township was closed after being struck by a Penske Truck on June 11th. The County commissioners contracted with Kevin E. Raker Construction LLC for the repairs which will cost approximately \$22,000. The truck struck and bent the horizontal beam of the steel height barrier and pulled the two vertical beams out of the ground, uprooting both from cement and asphalt. The news report also noted damage to a knee brace which supports the corner where the roof meets the wall. The original covered bridge was built in 1874 but replaced in 1983. *The Daily Item, December 12, 2022. Photo by Connie McLaughlin.*



Vermont

Rutland County

On December 2nd, members of the Vermont Covered Bridge Society added wreaths and other holiday decorations to Rutland County's covered bridges. Beth Brown-Limmer conceived the idea and obtained permission from the various select boards. Kevin Sweeney, owner of Rutland's O'Raine & Sun Painting, provided the labor and tools to hang the decorations, a local VCSB member provided the greenery, and Ann Chartrand of the Brandon Florist Shoppe provided ribbon and helped assemble the 14 sprays and swags. The group decorated all eight of the county's covered bridges. Beth hopes to make it an annual event. The photo at right shows her husband Paul removing the decorations after the holidays were over. *Rutland Herald, December 6, 2022. Photos and additional information courtesy Beth Brown-Limmer.*



West Virginia

Carrollton Bridge, Barbour County – WV/48-01-02

West Virginia Division of Highways (WVDOT) bridge crews in Barbour County are making good progress on repairs of the bridge badly damaged by a fire in August 2017. They hope to complete the estimated \$1 million project before this summer. Truss damage was more significant than anticipated

requiring more timbers be replaced than originally planned but nearly all of the arch was salvageable. On February 2nd, we received an update from WVDOT District 7 Bridge Engineer Chad Boram noting that the siding will be going up very soon. The siding boards were already painted and stained so they will only need a final coat after placement. Then



the roof will be added. The bridge was built in 1856 by brothers Emmett and Daniel O'Brien and crosses the Buckhannon River near Carrollton. The Buckhannon River crossing was added to the National Register of Historic Places in 1981. *Photos by Bob Watts, November 2022.*

West Virginia (continued)

Barrackville Bridge, Marion County – WV/48-25-02

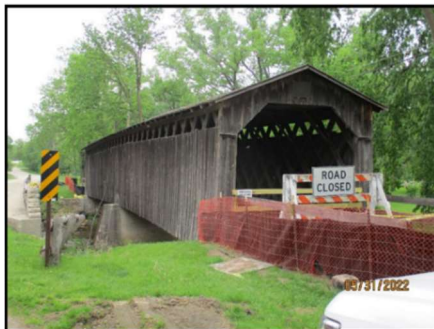
The Barrackville Covered Bridge Preservation Association continues their efforts to have the bridge repaired. On Sunday November 27th the community decorated the bridge for the third year. This time the lighting ceremony was done in memory of Scott Tharpe, a local attorney and beloved community member. NSPCB vice president Bob Watts visited while the group was decorating and provided this group photo. The photo of the decorated bridge is courtesy of the Barrackville Covered Bridge Preservation Society, a 501c(3) non-profit. Tax deductible donations can be made out to that organization and mailed to Lion’s Club, P.O. Box 429, Barrackville WV 26559. The next meeting for the Barrackville Covered Bridge Festival was scheduled for Thursday, February 23rd. For more information, email them at saveourbridge@aol.com or visit the association’s Facebook page (<https://www.facebook.com/SavetheBarrackvilleBridgeAgain>).



Wisconsin

Cedarburg Bridge, Ozaukee County – WI/49-46-01

In recent Newsletters we have shared updates on Wisconsin’s last historic covered bridge being closed due to a large crack on one of the lower chords. This photo was part of the county’s bridge inspection report. Repair plans required approval by the state Department of Natural Resources (DNR), which had concerns over how the work would affect the queen snake and the ellipse mussel. While the snakes are not known near the bridge, County Parks officials are aware of the mussels in Cedar Creek. Since there will be little work in the creek, they do not expect to disrupt the mussel beds. The DNR has issued a permit to proceed under the condition that the work be completed by March 10. A contract for the work has been issued and County Public Works Director Jon Edgren is confident that it will be completed in time. The 120-foot-long Town truss bridge was built in 1876 and retired from service in 1962. It was added to the National Register of Historic Places on March 14, 1973. *Ozaukee Press, February 01, 2023.*



Canada – New Brunswick

Benton or Eel River #3 Bridge, Carleton & York Counties – NB/55-02-15 & NB/55-15-12



Ross Wetmore, MLA (Member of the Legislative Assembly) for Gagetown-Petitcodiac informed us that this bridge was to receive new siding and cedar shingles during the winter. The single-span Howe & Queen truss bridge was built over the Eel River in 1927. *Photos by Bill & Jenn Caswell.*



New Brunswick (continued)

Darlings Island Bridge, Kings County – NB/55-06-04

A late report from New Brunswick informed us that, like many others in the province, this bridge is receiving roof and siding repairs. Kudos to the Department of Transportation and Infrastructure (DTI) for performing this much needed routine maintenance on their covered bridges. The single span bridge was built over Hammond River in 1914. It was bypassed by a new concrete bridge in 1996. *Photo by Bill & Jenn Caswell.*



Smithtown or Hammond River #3 Bridge, Kings County – NB/55-06-24

In the previous *Newsletter*, page 26, we reported that this bridge was undergoing some repairs which included a new roof, new siding and replacement of some of the Howe truss timbers. A week before the work was to be completed, heavy rains caused the Hammond River to rise carrying trees and other debris downstream. The combination of high water and debris caused the scaffolding around the bridge to buckle and collapse. No one was injured and there was no damage to the bridge. Damascus Road remained open to traffic. *Country 94, December 1, 2022 and CBC News, December 4, 2022. Photos by Tamara Langstroth, Secretary of the Covered Bridges Conservation Association of New Brunswick, before the collapse of the scaffolding.*



September 24, 2022



November 13, 2022

Patrick Owens or Rusagonis River #2 Bridge, Sunbury County – NB/55-12-05

Ross Wetmore, MLA for Gagetown-Petitcodiac informed us that this bridge was to receive new siding and cedar shingles during the winter. The two-span bridge was built over the Rusagonis River in 1909. *Photo by Bill & Jenn Caswell.*



New Brunswick (continued)

Starkey or Long Creek #1 Bridge, Queens County – NB/55-09-08

This bridge was closed after its approaches were badly damaged by floodwaters in the spring of 2018. In the Winter 2018/2019 *Newsletter*, page 25, we reported that the DTI was planning to repair it and intended to limit it to only pedestrian traffic. On December 15th, we received a letter from Jeff Carr, Minister of Transportation and Infrastructure, with an update on the bridge's status. Minister Carr stated, "I am pleased to inform you that work is underway, and we expect to restore this bridge not only for pedestrians but also for light vehicular traffic in the fall of 2023, depending on permitting material supply and weather."

Ross Wetmore, MLA for Gagetown-Petitcodiac, shared additional details on the project. In addition to repairing the damaged approaches, the bridge will be receiving new siding and cedar shingles. On February 10th, Mr. Wetmore forwarded an email from the DTI noting that, as of that date, all roofing materials (sheet metal, strapping, shingles) had been removed from the downstream side of the bridge and they were starting on the upstream side. Any roofing boards and roof trusses deemed to be in poor condition will be removed and replaced with new materials before the installation of new roofing shingles. Pile driving for the bridge's new approaches is planned for spring or summer 2023.



Photo by Bill & Jenn Caswell



Photos Courtesy New Brunswick DTI

Ontario

West Montrose or Kissing Bridge, Waterloo County – ON/59-50-01

On February 9th, we received an email from Michelle Pinto, the engineer heading the bridge's repair project for the Region of Waterloo. She noted that the bridge will be closed from February 16th until the 28th. "As a follow up to the Public Consultation held in 2022, a detailed inspection of the bridge is planned to evaluate the capacity of the existing wooden truss." She also noted that a "stakeholder workshop" has been scheduled for March 21st "to discuss the inspection results, potential rehabilitation alternatives and criteria to assess the alternatives." The NSPCB has been invited to attend and Bill Caswell is planning on representing the Society at the meeting. For more information on this project, visit the Region's website at <https://www.engagewr.ca/west-montrose>. *Photo by Bill & Jenn Caswell.*



Québec

We are grateful to Pascal Conner whose *Blogue sur les ponts couverts* (pontscouverts.com/blogue/) provides most of the Québec news each quarter. Unless otherwise noted, all Québec articles were derived from that website.

Pont de Saint-Placide-de-Charlevoix, Charlevoix Region – QC/61-14-03

We have been reporting on the damage caused by excessive snow on the roof almost a year ago and the temporary repairs performed in October. Six bids for work were unveiled January 9th by the Ministère des Transports du Québec (MTQ). Of the six bids, only one comes from a contractor in the region. They ranged between \$90,000 and \$249,999.99. The single-span Town lattice truss structure was built over Rivière Bras du Nord-Ouest in 1926 by Joseph Normandeau at a cost of \$2,076.21. *CIMT/CHAU Radio, January 10, 2023. Photo by Gérald Arbour.*



Pont Perrault, Notre-Dame-des-Pins, Appalaches Region – QC/61-06-01



After being closed for over four years, snowmobilers and ATVs were the first to use the restored bridge when the trail was opened. The Government of Quebec invested \$2,861,792 in the project. An official opening will occur in the spring. Built in 1927, the bridge over Rivière Chaudière this is the longest covered bridge in Quebec at 495 feet. *En Beauce, December 21, 2022. Photo by Gérald Arbour.*

Pont Bordeleau, Mauricie Region – QC/61-13-03

The MTQ has officially announced that the bridge will be moved a few meters to the south, then



replaced by a modern structure that meets current standards. The covered bridge over Rivière des Envies will receive some repairs, be repainted and serve as a rest stop with picnic tables for cyclists and walkers. If funding becomes available, the project could take place in 2024. The single-span Town



variation truss structure was built in 1932 and has been closed to all traffic since October 6, 2017. *L'Hebdo, January 19, 2023. Photos by Gérald Arbour.*

Pont Narrows, Fitch Bay, Cantons de l'Est – QC/61-69-03

On January 9th, *Le Reflet du Lac* reported that the Township of Stanstead has raised property taxes by 6.1% this year. The increase was for funding a number of projects including a planned \$1.3 million for work on this bridge in 2024. No details of the work to be done were mentioned. The single-span Town truss bridge was built over Fitch Bay Narrows in 1881 for \$775. The bridge was bypassed and closed to traffic in 1977. *Photo by Bill & Jenn Caswell.*



Québec (continued)

Pont Grassy Narrow, Abitibi-Témiscamingue Region – QC/61-70-12x

In the Winter 2018/2019 *Newsletter*, page 26, we reported that the remains of this bridge in Moffet were to be removed in 2019. The central span of the uncovered wood truss bridge was covered sometime between its construction around 1950 and 1958. In 1958 the siding was removed due to concerns that the wind would damage the whole structure. The southwest portion of the structure was burned on July 18, 1983 and again on May 23, 2015. A section of the northeast portion collapsed in 2010 and a second span collapsed sometime before 2016. On December 10th, Radio Canada announced that the ruins were finally removed. The mayor of Moffet stated that the community was looking into preparing interpretive panels to tell the story of the bridge. (1953 photo from the Richard E. Roy Collection, August 2018 photo by Simon Pratte.)



In 1958 the siding was removed due to concerns that the wind would damage the whole structure. The southwest portion of the structure was burned on July 18, 1983 and again on May 23, 2015. A section of the northeast portion collapsed in 2010 and a second span collapsed sometime before 2016. On December 10th, Radio Canada announced that the ruins were finally removed. The mayor of Moffet stated that the community was looking into preparing interpretive panels to tell the story of the bridge. (1953 photo from the Richard E. Roy Collection, August 2018 photo by Simon Pratte.)

2023 Covered Bridge Safari in Northern Vermont

From September 23rd through the 25th, the NSPCB will be joining forces with the Theodore Burr Covered Bridge Society of Pennsylvania for a trip through northern Vermont. Lodging details and a registration form have been included as an insert to this *Newsletter*. The routes have not yet been finalized, but here are some of the bridges we would like to visit. There could be up to 33 bridges on the agenda.



*East Fairfield Bridge
Franklin County
VT/45-06-03
Photo by Gloria Smedley*



*Fuller Bridge
Franklin County
VT/45-06-05
Photo by Jim Kenison*



*Scribner Bridge
Lamoille County
VT/45-08-09
Photo by Philip Caston*



*Slaughterhouse Bridge
Washington County,
VT/45-12-09
Photo by Philip Caston*



*Cambridge Junction Bridge
Lamoille County
VT/45-08-02
Photo by Steve Brown*



*Larkin Bridge
Orange County
VT/45-09-10
Photo by Todd Clark*