



# *The Newsletter*

*of the National Society for the  
Preservation of Covered Bridges, Inc.*

*Summer 2025*

## ***Honey Run Bridge Rebuilt***



*CA/05-04-01#2, Butte County, California*

*Ribbon Cutting Ceremony, April 12, 2025, Photo by Tyler Colwell*

*See article about the bridge on page 28.*

In this issue

Membership .....	2	Hyde Hall Celebration .....	7
NSPCB Meeting Calendar .....	2	Gov. Kirker Bridge .....	8
In Memoriam.....	3	Grange City & Ringos Mills Dedications.....	8
President's Message.....	4	2025 Safari .....	9
News of Members .....	5	Covered Bridge Meetings & Events .....	10
Meeting Reports.....	6	Covered Bridge News .....	12-27
World Guide Updates.....	7	Honey Run Bridge .....	28

The **NSPCB Newsletter** is published quarterly to keep the membership informed of current bridge news and upcoming events.

### NSPCB Contacts

#### Newsletter Editor

Bill Caswell  
535 2nd NH Tpke  
Hillsboro, NH 03244-4601  
WSCaswell@yahoo.com

#### Corresponding Secretary

Robert Watts  
126 Merrimac St. Unit 21  
Newburyport, MA 01950  
508-878-7854  
bob1.watts@me.com

#### Membership Dues and Address Changes

Jenn Caswell  
Membership Chair  
535 2nd NH Tpke  
Hillsboro, NH 03244-4601  
nspcb@yahoo.com

#### Topics Back Issues

Contact Bill Caswell at the address above

#### Treasurer

Gloria Smedley  
1143 Sage Drive  
York, PA 17408

#### Next Newsletter Deadline

The next *Newsletter* is scheduled to be mailed in early **September**, therefore, anyone wishing to submit articles should send them by **August 15, 2025**. Articles and photos can be emailed to [nspcb@yahoo.com](mailto:nspcb@yahoo.com) or mailed to Bill Caswell at the address above.

We appreciate any information sent in even if we cannot ultimately use it in the *Newsletter*.

#### NSPCB Website

[www.coveredbridgesociety.org](http://www.coveredbridgesociety.org)

## Welcome New Members

Juell Buckwold, Harwich, Massachusetts  
Anthony Caruso, Warner, New Hampshire  
Thomas Caruso, Campton, New Hampshire  
Nichole L Derugen, Spruce Creek, Pennsylvania  
Mark Ferri, Windham, New Hampshire  
Stephen Jenkins, Exeter, New Hampshire  
Donna C. Kidd, Nelson, New Hampshire  
Peter Opstrup, Cambridge, Vermont

## Welcome New Life Member

#225 – Brian Warren, Baton Rouge, Louisiana  
#226 & #227 – Paul & Heather Watkins, Morton, Pennsylvania

## 2025 NSPCB Meetings & Events

All meetings begin at **1:00 PM** unless otherwise noted. If you plan to attend a meeting, please check the NSPCB website ([www.coveredbridgesociety.org](http://www.coveredbridgesociety.org)) or contact Bill Caswell at [nspcb@yahoo.com](mailto:nspcb@yahoo.com) a couple days before the event to inquire if it has been necessary to make any last-minute adjustments to the published schedule. Meetings will be available by Zoom when possible.

**Sunday, June 22** – Contoocook Covered Bridge, Contoocook, New Hampshire. Bring your own chairs.

**Sunday, July 27** – The Barn Yard, Ellington, Connecticut. Learn about the construction of this traditionally built bridge.

**August 9-10** – Joint safari with the New York State Covered Bridge Society. See details on page 9.

**Sunday, August 24** – Annual picnic at Beaver Meadow Village at the end of Waumbec Road, Concord, NH. The cookout is at noon and the meeting at 1 pm.

**Sunday, September 28** – Baltimore Bridge, Springfield, Vermont. Bring your own chairs and picnic lunch.

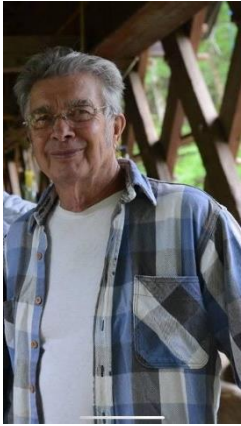
**Saturday, October 11** – Hyde Hall 200th Anniversary celebration, Glimmerglass State Park, near Cooperstown, New York

**Sunday, October 26** – NSPCB Annual Meeting and Dinner, Brigham Hill Barn, North Grafton, Massachusetts. Speaker: Ron Knapp.



## In Memoriam

### Arnold Milton Grāton



Arnold Milton Grāton, age 87, Master Covered Bridgewright, passed away on May 6, 2025, at his home in Ashland, New Hampshire with his wife Meg by his side. Arnold devoted his life to preserving America's architectural heritage through the restoration and construction of covered bridges and historic structures. Arnold and his team often lived and worked at his projects across the United States. His work was his passion as well as a cold, dark beer at the end of the day. Arnold was a problem solver and excelled at tackling difficult projects. He was widely respected for his commitment to traditional craftsmanship and historical accuracy. Arnold was a man of few words but often offered a dry sense of Yankee humor.

Throughout his notable career, Arnold built 16 new covered bridges and restored more than 65 others. His reputation brought requests for covered bridge work well beyond his New Hampshire home such as the Bunker Hill Bridge in North Carolina (1994), Knight's Ferry Bridge in California (1995), Auchumpkee Creek Bridge in Georgia (1997), Utica Mills Bridge in Maryland (1997), and Tuscarora Covered Bridge in upstate NY (2012). In 2005, Arnold consulted on the work at Kentucky's Goddard Bridge which would be followed by work on six other Kentucky covered bridges over the following 20 years. In 2008 his team reconstructed the former Bagley Bridge of Warner, NH as the Will Henry Stevens Bridge in North Carolina, 42 years after it was removed from its original location.

Arnold's experience extended well beyond covered bridges to varied undertakings such as relocating a round barn to the Shelburne Museum in Vermont, work on the timber frame at the James Madison mansion in Virginia, restoring a church in South Carolina, repairing NH fire towers, building Timber bridges on Mt. Washington's Tuckerman's trail and work on the Mayflower II at Mystic Seaport in Connecticut.

Arnold was known for his quiet humility and demeanor, allowing his work to speak for itself. His integrity was evident in every project he undertook—his handshake, a reflection of his honesty and determination. Arnold preferred to go about his work to the best of his ability without seeking the attention, awards and accolades often associated with such accomplishments. He was more at ease working with wood and building a bridge than he was talking about his ability and knowledge. He was happy to discuss details of his projects with anyone interested in listening, not out of pride, but to educate others about his methods so they could learn from his lifetime of experience.

Arnold's legacy and work will be carried on by his wife, his stepson Tim and the team of Arnold M. Grāton Associates. They are committed to carrying forward his principles and work ethic.

Arnold requested that there be no funeral or public observance of his passing.

An appreciation of his life and work will be planned for a later date.

### Bill Baldwin

Longtime member William J. Baldwin Sr. passed away on February 4<sup>th</sup>. He was employed at Faxon Hospital in Utica for 27 years retiring as the Administrative Director of Radiology. He was a member of the Chittenango United Methodist Church. He enjoyed fly fishing and tying his own flies, hunting, golfing, being a softball umpire, watching all sports including hockey on TV, an avid baseball fan rooting for anyone but the Yankees, playing chess and assisting in many events at the Chittenango Fire Department. He was predeceased by his son William Jr. in 2022. He is survived by his wife of 56 years, the former Anita Jones, two daughters and six grandchildren. Bill & Anita have been NSPCB members since 1983.



## President's Message

I start this message by expressing a deep sorrow for the loss of our dear friend, Arnold Grāton who passed away on May 6<sup>th</sup> at age 87. Those who knew him well knew that Arnold was a very humble man dedicated to his craft. He didn't seek attention or notoriety, choosing instead to let the satisfaction of a job well done be his reward. We consider ourselves blessed to have had many opportunities to spend time with Arnold and Meg enjoying a cold beer and hearing interesting tales from a lifetime of projects. We are fortunate that Meg and her son Tim have been so involved in the work over the years that they will be continuing this important work of preserving our nation's historic covered bridges.

On a more positive note, we have also gained a number of new members this quarter including three new life members. Welcome to all!



*Goddard Bridge, KY/17-35-06  
Fleming County, Kentucky  
May 1, 2017*

It looks like New Brunswick will be losing another of its uncovered wooden truss bridges. Sadly, the uncovered spans do not get the attention of the covered bridges and are being lost at an alarming rate. Unlike covered bridges where a closure prompts local officials and citizens to campaign for the structure's repair, the Mayor of Minto and area residents are circulating petitions to have the Newcastle Creek #1 Bridge removed and replaced. No efforts to preserve the bridge by the NSPCB or Covered Bridges Conservation Association of New Brunswick (CBCANB) will have any chance of success without community support. After that, we learned that the Germantown Lake covered bridge in Albert County, New Brunswick is also slated for demolition and will be gone by the time you read this. The bridge had been closed for a year and, again, there seemed to be little local interest in preserving it.

As this newsletter was being prepared for the printer, Jenn and I spent a weekend with Wayne and Karen Marshfield refining plans for our joint August safari with the New York State Covered Bridge Society. Updated details on the tour are in a separate article.

Remember, it is up to every one of us to help preserve our historic covered bridges. If you see something that isn't right, say something. Whether it is a bridge in need of repair, excessive graffiti or an oversized vehicle using the bridge, let the proper authorities know about it. Local/County/State government officials need to know that we care about these structures and want them to be around for future generations to enjoy and learn from.

*Bill Caswell*



### Covered Bridge Guide Phone App

Our Covered Bridge Guide phone app is now publicly available in the Apple App Store for iPhones and iPads!

Search for *Covered Bridge Guide* or scan the QR code for more information. If you find it useful, please leave a review.

We are working on also making it available in Google's Play store for Android devices.



## News of Members

Members sharing their interest in covered bridges through presentations and published articles helps raise awareness of the historic value of those structures. Let us know how you are helping spread the word.

### Jim Poeppelman

Darke County Parks will be remodeling the footbridge at Prairie Ridge Meadow in Greenville, Ohio. Jim Poeppelman has been working as a volunteer for Darke County Parks for 15 years. When discussion of replacing the bridge got underway, he suggested that it be rebuilt as a covered bridge. Poeppelman built a model, 10 inches high, to show the plan for the structure. The middle section of the covered bridge will be 80 feet long and the approaching areas on both sides will be 40 feet each. This makes this bridge a total of 160 feet long.

The estimated cost for this project is from the high \$30,000's to \$40,000. Some of the materials for the project have been donated or from local sources and others have offered to contribute equipment. They plan to build the bridge in the late summer/early fall timeframe. Actual construction will depend on when they receive the materials. Volunteers to help with the project are welcome.

From left to right: Michael Colamarino (operations and maintenance manager at Darke County Park District), Jim Poeppelman, and Robb Clifford (executive director of Darke County Parks). News from the Daily Advocate, May 7, 2025. Photo by Brittany Hill of the Daily Advocate.

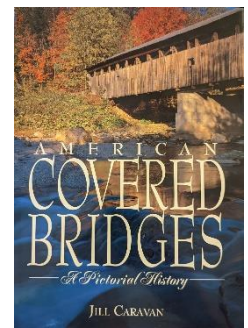
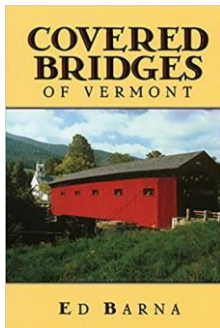


### Ron Knapp

On April 13th, the Daily Freeman newspaper from Kingston, New York, published a story about the covered bridges in Ulster County. They interviewed Ron Knapp for the article. He mentioned efforts to preserve the county's historic covered bridges including the desire to apply fire retardant to Perrine's Bridge. He also mentioned that he placed a guestbook at Perrine's Bridge to see where visitors come from and their reactions. In the five years it has been in place, the guestbook has visitor entries from 35 states and 27 countries.

## Used Books

We occasionally receive donations that include covered bridge books. While some of the books are added to the Society's permanent collection in the archives in Concord, New Hampshire, others are available for sale. We do not include the list in the *Newsletter* because it often changes and would be outdated before you receive it. There is a list on the website which is updated as new items are received and others are purchased. For more details, visit <https://www.coveredbridgesociety.org/books-used.htm>.



## NSPCB Facebook Page

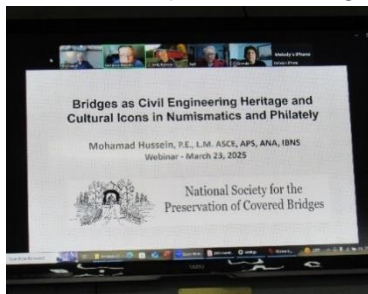
To help spread the word about our mission, the National Society for the Preservation of Covered Bridges, Inc. has a Facebook page. The page is used for sharing current bridge related news and Society meeting information. If you use Facebook, visit us at <http://www.facebook.com/nspcb>. "Like" our page and share it with your friends.





## March Meeting

The first public meeting of 2025 was a combined in-person and Zoom gathering at the Masonic Lodge in Boscawen, New Hampshire on March 23<sup>rd</sup>. The meeting featured a presentation by member Mohamad H. Hussein of Florida about the depictions of bridges of all types on money and stamps. Mohamad also discussed the development of one of his favorite stamps, the 1952 stamp commemorating the 100<sup>th</sup> anniversary of the American Society of Civil Engineers.



At the meeting members also approved the by-law amendment clarifying start and end terms of elected positions. A request for fire retardant for Perrine's Bridge in Ulster County, New York, was approved pending confirmation from county officials that a plan is in place for application of the material. The group also pledged a contribution up to \$17,500 towards replacement of the roof of the Kirker Bridge in Adams County, Ohio. *Photos by Scott Wagner and Bob Watts.*



## April Meeting

The April meeting was held at the Museum of Old Newbury in Newburyport, Massachusetts, on April 27<sup>th</sup>. We were also able to have some members attending by Zoom. Bob Watts, co-vice president and Board member of the Museum of Old Newbury, offered an interesting and entertaining presentation about the eclectic history of transportation and infrastructure in the Newburyport area. In addition to Timothy Palmer's work in the area, Bob also introduced us to the town's other bridges and transportation systems. *Photos by Scott Wagner.*



## Annual Meeting

The annual meeting has been confirmed for Sunday, October 26, 2025, at the Brigham Hill Community Barn in North Grafton, Massachusetts. Note that after a few years of Saturday events, we have shifted back to traditional Sunday gatherings. Lunch will be served at noon with a presentation by Ron Knapp from New Paltz, New York. Ron has authored or co-authored numerous books related to covered bridges and Chinese architecture. The business meeting and election of officers will follow the presentation.

## Updates to the *World Guide to Covered Bridges*

For a complete list of changes, please visit the website at [www.coveredbridgesociety.org](http://www.coveredbridgesociety.org) and click on the *World Guide* link.

Page 2, Talladega County, note change in status

AL/01-61-02 Waldo Talladega Creek Waldo or Riddle Mill 1 115' c1858 Howe & Queen

The new property owners have requested that we remove information regarding its location. Out of respect for their privacy, driving directions and coordinates are being removed from the NSPCB and Covered Spans of Yesteryear websites. We ask that you respect the No Trespassing signs posted on the property.

Page 43, Linn County, Missouri, update coordinates of the Locust Creek Bridge, MO/25-58-01, to N39° 45.250', W93° 13.040'. The bridge has been moved to a new location.

Page 165, Albert County, New Brunswick, remove the William Mitton Bridge, NB/55-01-22. It was demolished on February 26, 2025.

Page 237, add a bridge in Harghita County, Romania, RO-22-02, near Lăzarea over the Mureș River. Probably 1 span on a farm road about 8 km (5 miles) west of Lăzarea. N46° 45.374', W25° 26.779'

## Hyde Hall Bridge 200<sup>th</sup> Anniversary Celebration



New York's Glimmerglass State Park and the Hyde Hall State Historic Site invite you to a grand celebration of the 200<sup>th</sup> anniversary of America's oldest covered bridge on Saturday, October 11<sup>th</sup>, from 10am to 4pm. Hundreds of visitors from around the country, including many from covered bridge societies, are expected to attend free events ranging from special presentations about the history of covered bridges, music from old time music specialists and Cooperstown High School students; a classic car show; children's activities; speeches honoring the 1825 bridge; and the unveiling of a model of the bridge with historic photographs. The New York State Covered Bridge Society, the Theodore Burr Covered Bridge Resource Center and the NSPCB are also involved in planning the event.

A souvenir booklet about the bridge will be available, along with special edition post cards with a unique postmark and a special license plate with the bridge included. Food and drink will be available for sale. Please note: If you plan on camping, note that campsites at Glimmerglass are likely already all reserved.

There will be an opportunity for covered bridge societies to have tables to distribute materials and greet visitors at the event. Plans are being made for a dinner at a nearby restaurant that evening for covered bridge aficionados to socialize.

Hyde Hall bridge, 53 feet long, was built to provide access to the estate of George Clarke. Some notable visitors to the estate who crossed the bridge include Theodore Roosevelt, Franklin & Eleanor Roosevelt, Samuel F.B. Morse, and Juliette Gordon Low. The rain date is Sunday, October 12. For more information, please contact Wayne Marshfield at [w.marshfield1947@gmail.com](mailto:w.marshfield1947@gmail.com). *Photo by Trish Kane.*





## The Governor Kirker Bridge Needs Your Help



Donations are being sought for repairs to this bridge in Adams County, Ohio, OH/35-01-10, which was damaged by a tornado on April 2, 2024. *A special fund has been set up by the Adams County Travel & Visitors Bureau in cooperation with Adams County Economic & Community Development and the Adams County Commissioners.*

The bridge, named after Ohio's second governor, Thomas Kirker, was built in 1890 and holds significant historical value for the community. The Kirker family still resides in Adams County. The span is owned by the county and has been maintained by the Adams County Travel and Visitors Bureau.

So far, \$37,600 has been raised which is enough to replace the roof. Bids for that project are being solicited now. "We're hoping to get a roof on it, get the bridge painted, get some of the outer wood structure repaired and replaced, and at least get it back working," said Tom Cross, Executive Director of the Visitor's Bureau. Cross said that the restoration relies solely on donations and grants, primarily from historical bridge societies, with no taxpayer dollars involved.

In addition to replacing the roof, needed repairs include painting the bridge, repairing the stone foundation, replacing the wingwalls, and replacing deteriorating courses of stone. The total cost is from \$72,000 to possibly \$100,000. Additional work may also be needed. The single-span multiple kingpost truss bridge over East Fork, Eagle Creek was bypassed in 1973 and added to the National Register of Historic Places on October 29, 1975.

Donation checks should be made out to The Kirker Covered Bridge Fund and sent to them at  
P.O. Box 577, West Union, OH 45693

The Adams County Travel & Visitors Bureau is a 501(c)3 non-profit, all donations are tax deductible. *Photos by Jim Huey.*



## Grange City & Ringos Mills Dedications

Save the date, October 3, 2025, for dedications of the recently restored Grange City and Ringos Mills covered bridges in Fleming County, Kentucky.



The event is scheduled to begin at 1:30 at the Grange City Bridge. We hope that many of our members living in the area will be able to attend. *Grange City Bridge Photo (left)*



*by Todd Clark. Ringos Mills Bridge Photo (right) by Aline Bevacqua.*



## 2025 Safari

On August 9 & 10, 2025, the NSPCB and New York State Covered Bridge Society will host a safari to covered bridges in Cheshire County, New Hampshire, Windham County, Vermont and Franklin County, Massachusetts. The tour will be based in Brattleboro, Vermont.

Our base will be at the Colonial Inn and Spa, 889 Putney Road, Brattleboro, VT 05301. Discounted Rates (including taxes) are \$115.00 for a king bed and \$130.00 for two queens. To reserve your room, call 1-802-257-7733 and mention that you are with either the National or the New York Covered Bridge Societies. If you need to cancel the reservation later, a refund will be given up to August 6<sup>th</sup>. Hot and cold breakfast is included in the price and available each day. They have an indoor pool, free Wi-Fi, and rooms have a small refrigerator and microwave.



*West Swanzey or Thompson Bridge,  
Swanzey, NH, NH/29-03-04*

Saturday's route will begin with the New Hampshire bridges and end with the two north of Brattleboro. The Creamery Bridge in Brattleboro will either end the day on Saturday or be the first stop on Sunday depending on how the day goes. We plan to pick up sandwiches from Gomar's Market in Swanzey for lunch and bring them to the West Swanzey Bridge where there is a small pavilion with two picnic tables. Attendees will be provided with an order form if they wish to purchase a sandwich from them for lunch.

Sunday's route will visit the Green River Bridge in Vermont and then continue to the Massachusetts spans. Lunch on Sunday will be in Shelburne Falls. There are several restaurants in the center of town where we will park and let people choose from the variety of options.

A 12-passenger van has been reserved for those who prefer to let someone else do the driving. A seat on the van for the two days is available for \$50 and, as of this writing, half of them have already been claimed. If you are interested in attending, please email Bill Caswell ([wscaswell@yahoo.com](mailto:wscaswell@yahoo.com)) or Wayne Marshfield ([w.marshfield1947@gmail.com](mailto:w.marshfield1947@gmail.com)) to be added to the mailing list for future updates.

The bridges that we plan to visit are:

### Saturday Morning, August 9:

Ashuelot.....NH/29-03-02  
 Coombs .....NH/29-03-03  
 Slate .....NH/29-03-06#2  
 Carlton .....NH/29-03-07  
 Sawyer's Crossing .....NH/29-03-05  
 West Swanzey .....NH/29-03-04

### Saturday Afternoon:

West Dummerston ..... VT/45-13-02#2  
 Williamsville ..... VT/45-13-05#2  
 Creamery ..... VT/45-13-01

### Sunday Morning, August 10:

Green River..... VT/45-13-04  
 Arthur Smith ..... MA/21-06-03#2  
 Pumping Station..... MA/21-06-02#2

### Sunday Afternoon:

Bissell ..... MA/21-06-04#2  
 Creamery ..... MA/21-06-11  
 Burkeville or Conway..... MA/21-06-01

## Upcoming Covered Bridge Meetings & Events

For more information on these events from other bridge societies, visit their websites.

Covered Bridges Conservation Association of New Brunswick, Canada (CBCANB)

..... [www.facebook.com/groups/CoveredBridgesConservationAssociationNB/](http://www.facebook.com/groups/CoveredBridgesConservationAssociationNB/)

Indiana Covered Bridge Society (ICBS) ..... [www.indianacoveredbridges.org/](http://www.indianacoveredbridges.org/)

New York State Covered Bridge Society (NYSCBS) ..... [www.nycoveredbridges.org/](http://www.nycoveredbridges.org/)

Ohio Historic Bridge Association (OHBA)..... [oldohiobridges.com/new/](http://oldohiobridges.com/new/)

The Theodore Burr Covered Bridge Society of Pennsylvania (TBCBSP) ..... [www.tbcbspa.com/](http://www.tbcbspa.com/)

Vermont Covered Bridge Society (VCBS) ..... [www.vermontbridges.org/](http://www.vermontbridges.org/)

Events could be cancelled or rescheduled on short notice. If you plan to attend, please confirm that the event is actually taking place with the group hosting it.

<b><u>June</u></b>	<p><b>Sunday, 1<sup>st</sup></b> – 2:00 PM, TBCBSP Monthly Meeting at St. Paul Episcopal Church, 340 Locust St., Columbia, Pennsylvania.</p> <p><b>Saturday, 7<sup>th</sup></b> – VCBS Spring Meeting, Main Street Arts, 35 Main St., Saxtons River, Vermont.</p> <p><b>Sunday, 8<sup>th</sup></b> – NYSCBS meeting, Salisbury Grange Hall #624, at 2550, County Route 29, Salisbury Center.</p> <p><b>Saturday, 14<sup>th</sup></b> – Barrackville, West Virginia, Covered Bridge Festival.</p>
<b><u>July</u></b>	<p><b>Sunday, 6<sup>th</sup></b> – TBCBSP Fundraiser Dinner at Hoss's Steak &amp; Sea House, 3604 Market St., York, Pennsylvania. Lunch at 12:30 PM followed by monthly Business Meeting. A percentage of proceeds will be donated to the TBCBSP Preservation Fund.</p> <p><b>Sunday, 20<sup>th</sup></b> – 1:00 PM, NYSCBS meeting, Ashokan, New York (exact location TBD)</p> <p><b>Sunday, 20<sup>th</sup></b> – 12:00 noon, OHBA Summer Picnic, Salt Creek Covered Bridge, Arch Hill Road, east of Zanesville, Ohio.</p> <p><b>26 &amp; 27</b> – ICBS Summer Tour in Perry and Spencer Counties.</p>
<b><u>August</u></b>	<p><b>Sunday, 3<sup>rd</sup></b> – 2:00 PM, TBCBSP Monthly Meeting at St. Paul Episcopal Church, 340 Locust St., Columbia, Pennsylvania.</p> <p><b>9-10</b> – NYSCBS Safari, Southwestern New Hampshire, Southeastern Vermont &amp; Massachusetts</p>
<b><u>September</u></b>	<p><b>Sunday, 7<sup>th</sup></b> – Noon, TBCBSP Annual Picnic and meeting at Poole Forge Bridge.</p> <p><b>Sunday, 14<sup>th</sup></b> – 1:00 PM, NYSCBS virtual meeting.</p> <p><b>Saturday, 20<sup>th</sup></b> – OHBA Fall Tour, TBA.</p> <p><b>20-21</b> – Washington &amp; Greene Counties Covered Bridge Festival. Events at various locations. Visit <a href="https://www.visitwashingtoncountypa.com/covered-bridge-festival/">https://www.visitwashingtoncountypa.com/covered-bridge-festival/</a> for more details.</p> <p><b>20-22</b> – TBCBSP Safari in West Virginia and Virginia.</p>
<b><u>October</u></b>	<p><b>2-5</b> – Columbia-Montour County (Pennsylvania) Covered Bridge and Arts Festival. See <a href="https://itourcolumbiamontour.com/covered-bridge-festival/">https://itourcolumbiamontour.com/covered-bridge-festival/</a> for details.</p> <p><b>Saturday, 4<sup>th</sup></b> – 10:00 AM, VCBS Fall Meeting, Weathersfield, Vermont.</p> <p><b>4-5</b> – ICBS tour of Fayette and Franklin counties.</p> <p><b>10-19</b> – Parke County (Indiana) Covered Bridge Festival. Events at various locations. See <a href="https://www.coveredbridges.com/covered-bridge-festival">https://www.coveredbridges.com/covered-bridge-festival</a> for details.</p> <p><b>Saturday, 11<sup>th</sup></b> – Blount County (Alabama) Covered Bridge Festival in Oneonta. See <a href="http://facebook.com/CoveredBridgeFest">http://facebook.com/CoveredBridgeFest</a> for more details.</p> <p><b>Sunday, 12<sup>th</sup></b> – 2:00 PM, TBCBSP Monthly Meeting at St. Paul Episcopal Church, 340 Locust St., Columbia, Pennsylvania.</p>



## Dues Increase

Everyone is experiencing increased costs of living and our organization is no different. We have been debating a dues increase for the past couple of years and, until now, have kept postponing the decision. The last increase, from \$15 to \$20, occurred on January 1, 2008. We have been fortunate to be able to work with that budget for the last 17 years.

Membership dues only cover the cost of printing and mailing *Topics* and the *Newsletter* each quarter. Sales of Society merchandise (calendars, clothing, *World Guides* and other goods) cover the costs associated with those items. Income derived from those sales and monetary donations received are used towards donations of fire retardant and bridge repairs. All other expenses associated with operating the organization (fees for meeting locations, insurance, office supplies, archives lease, etc.) are covered by proceeds from an investment account set up after receiving a very generous bequest from the estate of Norman Merritt of Texas who passed away in September 2008.

The topic was discussed at the annual meeting and postponed again. At that time, attendees were informed that the cost of printing the two publications and envelopes to mail them plus postage for the previous 12 months cost \$22.99 per member. Printing costs have been stable for the past few years and the cost of printing *Topics* actually decreased when we switched printers in 2018. However, postage costs have nearly doubled over the past decade and even though we have a bulk rate, non-profit discount, it has still impacted the overall cost.

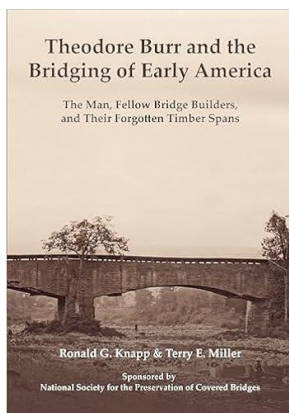
Therefore, as of July 1, 2025, the following membership rates will be in effect:

Annual Membership (U.S. addresses, Individual or Family).....	\$25.00
Annual Membership (Other countries, Individual or Family).....	\$35.00
Single Life Membership (U.S. addresses only) .....	\$400.00
Couple Life Membership (U.S. addresses only).....	\$450.00

## Theodore Burr and the Bridging of Early America:

### The Man, Fellow Bridge Builders, and Their Forgotten Timber Spans

Authors Ron Knapp and Terry Miller collaborated to create a 500+ page story of Burr's bridge-building career and aspects of his personal life discovered during their three years of research. They provide a compelling narrative of a very interesting man who lived during an important period of American history.



The NSPCB is proud to sponsor this significant contribution to the history of covered bridge building in America. Proceeds from book sales are being donated to the NSPCB to be used for covered bridge preservation projects.

The book is divided into three parts.

- An introduction to Theodore Burr and family.
- Chronicles of Burr's bridges with individual chapters dedicated to more significant ones.
- Burr's legacy and use of the "Burr Arch-Truss" after his death.

It is available from Amazon in Kindle, softcover and hardcover versions. Search for it on amazon.com or scan this QR code for additional details.



SCAN ME

## Covered Bridge News

### Alabama

#### Waldo or Riddle Mill Bridge, Talladega County – AL/01-61-02

The property where this bridge sits has changed hands and is now a private residence. The new owners have posted No Trespassing signs yet still see visitors crossing their property to visit the bridge. They have requested that we remove information regarding its location. Out of respect for their privacy, driving directions and coordinates have been removed from the NSPCB and Covered Spans of Yesteryear websites. We ask that our members also respect the No Trespassing signs posted on the property. The site was once Riddle's Mill, a grist mill which was later converted into the Waldo Town Hall and then a restaurant. The bridge was condemned by the state in the 1960s and its approaches removed. Even though there was extensive restoration work done to establish a recreational park, the project was soon scrapped. As a result, the structure was left to sit on its two stone piers "as is."

### Connecticut

#### West Cornwall or Hart Bridge, Litchfield County – CT/07-03-02

On April 3<sup>rd</sup>, the Connecticut State Police (Troop B) reported that the 1864 bridge over the Housatonic River was damaged by an oversized vehicle that tried to cross. The vehicle became stuck on the bridge and caused some damage. The bridge was closed for a short time to remove the vehicle and engineers from the Connecticut Department of Transportation determined the bridge was safe to use so the road was reopened. At their April 15<sup>th</sup> meeting, Cornwall's selectmen discussed possible deterrents such as better signage, laser beam height detectors, flashing lights, sound triggers and metal beam rails. Residents were encouraged to submit letters of support or suggestions to the Town Hall. The two-span Town lattice structure was added to the National Register of Historic Places on December 30, 1975. *The Lakeville Journal, April 23, 2025. Photo Courtesy Connecticut State Police.*



### Georgia

#### Concord Road Bridge, Cobb County – GA/10-33-02



According to Cobb County DOT, a car carrier struck the protective beam at the entrance to the bridge. The driver was cited and crews worked to repair the damage. Over the years, the bridge and its protective clearance beam have been repeatedly struck by vehicles taller than the posted 7-foot height limit. There are numerous warnings in advance of the bridge and ultimately, the steel barrier which usually keeps vehicles from striking the bridge itself. The two-span modified queenpost truss bridge over Nickajack Creek was built in 1891. It was added to the National Register of Historic Places on November 24, 1980. *11alive, April 25, 2025. Photo Courtesy Cobb County Government.*



## Indiana

### Spencerville or Coburn Bridge, DeKalb County – IN/14-17-01

The Smith truss bridge over the St. Joseph River will receive a new steel roof this summer. The work will include removal of the existing cedar shakes and replace them with steel siding that looks like cedar shake. Four bids were received for the work. The bids were reviewed by the county's Highway Superintendent and R.G. Zachrich was selected by the County Commissioners at their April 28<sup>th</sup> meeting. Their bid was \$186,356 with a \$2,580 alternate to install cedar fascia. Zachrich has done other work on the bridge in the past. The bridge was built in 1873 and added to the National Register of Historic Places on April 2, 1981. *DeKalb County Star, April 16 and April 29, 2025. Photo by Bill & Jenn Caswell.*



### Cades Mill Bridge, Fountain County – IN/14-23-02

Restoration of the bridge is complete and a celebration is scheduled for June 8<sup>th</sup>. Daniel Kurdziel of Kurdziel Barker Engineering provided the left image before work started and the two photos of the completed project. The single-span 1854 Howe truss bridge over Coal Creek, along with the other two covered bridges in Fountain County, were added to the National Register of Historic Places on May 24, 2021.



*Portal before the work.*



*After repairs were completed.*



*After repairs were completed.*

### Bell's Ford Bridge, Hamilton County – IN/14-29-14

Greg McDuffee, vice president of the Indiana Covered Bridge Society, visited the bridge in April and offered these photos. A ribbon-cutting was planned for the Spring. This bridge spanning Fall Creek next to Florida Road on the east side of Fishers at the southern end of Geist Park is the only example of a Post truss covered bridge. The 160' span was built with material from the former Bell's Ford Bridge which once stood in Jackson County, Indiana. It is flanked with approach spans to cover the 400' between abutments.





## Indiana (continued)

### Traders Point or D.W. Brown Bridge, Marion County – IN/14-49-07

This privately-owned bridge has been in need of repair for many years. The present owner is not able to maintain it and is hoping to have it relocated to a place where it can be preserved. The single-span



Howe truss bridge was built over Fishback Creek about 0.6 miles from its present location by Josiah Durfee of Noblesville, Indiana, in 1880. It was condemned in 1959 and purchased by Dewitt Brown who had it moved to his



property in 1960 when the new bridge across the creek was to be built. There have been discussions about moving it to Eagle Creek Park, about four miles away if funding for that work can be found. If we receive specific details of a fundraising effort, we will share that information. *Photos by Greg McDuffee.*

### Melcher Bridge, Parke County – IN/14-61-26

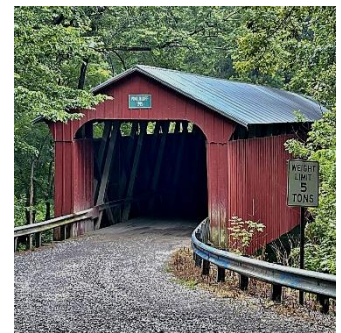
In the Fall 2024 *Newsletter*, we reported that the abutments of this bridge had deteriorated to the point where they need to be replaced. The project was stalled so the bridge unfortunately remained uncovered through the winter. We have heard that repairs may be starting up again soon. Once the abutment work is complete, work on the wooden structure can be completed. The single-span Burr truss bridge over Leatherwood Creek was built by J. J. Daniels in 1896. *Photo courtesy Kurdziel Barker Engineering.*



### Pine Bluff Bridge, Putnam County – IN/14-67-03

At the annual meeting of the Heritage Preservation Society of Putnam County (HPS), it was reported that this two-span Howe truss bridge spanning Big Walnut Creek in the northern part of the county is “a strong candidate” for the prestigious National Historic Landmark designation. The county’s nine covered bridges were all added to the National Register of Historic Places on May 21<sup>st</sup> of last year. They are hoping that the Landmark designation will provide additional funding for upkeep and events.

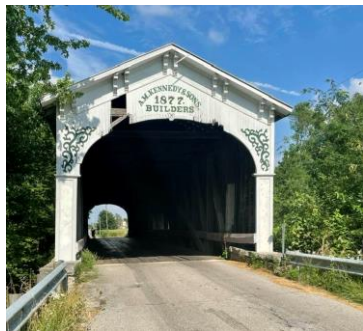
HPS scheduled a Putnam County Covered Bridge Day for Saturday, May 17 with a presentation at the Community Room in the Putnam County YMCA, 1111 S. Calbert Way, along with visits to both Baker’s Camp covered bridge and Pine Bluff covered bridge, both near Bainbridge. There will be no cost to attend but HPS is seeking free will donations to be used to establish an endowment at the Putnam County Community Foundation for the preservation of local covered bridges. *Banner Graphic, March 31, 2025. Photo by Greg McDuffee.*





## Indiana (continued)

### Smith or Ewbank Bridge, Rush County – IN/14-70-01



We started following this project in 2019. The most recent article was on page 15 of the Fall 2024 *Newsletter*. The project is now nearly complete. According to project engineer Daniel Kurdziel, it received new arch ends and the lower chords were repaired. Two cranes worked in tandem to move the bridge from its abutments to dry land on July 22, 2024, so contractors had better access to do the repairs. The span was relocated back on to its abutments in mid-March and repairs should be completed soon. The single-span Burr truss bridge over Flat Rock River was built in 1877. It was added to the National Register of Historic Places on February 2, 1983. *Photo by Gregg McDuffee before repairs started.*

## Kentucky

### Ringos Mill Bridge, Fleming County – KY/17-35-04



On March 20<sup>th</sup>, Arnold M. Gräton Associates announced that the repairs to this bridge have been completed. This project replaced all four corner pieces of the bottom chord improving on some earlier repairs by adding 40' lengths to bring the bridge back to the original chord lengths. They added all new shear and splice blocks, 4 new floor joists and several vertical posts were spliced, the deck was preserved. One 36' long top chord needed to be replaced. The bridge now has new siding and a new roof. *Photos by Aline Bevacqua.*



### Grange City or Hillsboro Bridge, Fleming County – KY/17-35-05

A challenging winter complicated this project near the end, but we are happy to report that repairs to this bridge are now complete. Prior to this work, both abutments were failing causing the bridge to lean precariously downstream. The bridge also had a pronounced sag. The abutments have been repaired, the sag has been transformed into a positive camber and it sports a new roof and siding. *Left photo before repairs by Lori Ulrich, center photo by Aline Bevacqua, right photo by Todd Clark.*



## Maryland

### Roddy Road Bridge, Frederick County – MD/20-10-02#2



The height restrictor on the south side of the bridge was struck and damaged on February 28<sup>th</sup>. The bridge re-opened on March 3<sup>rd</sup> after repairs were made. The bridge was not damaged. A second incident occurred on the north end of the bridge on April 19<sup>th</sup>. Again, the height restrictor was damaged while protecting the bridge. The driver remained on the scene until police arrived. *The Frederick News-Post, March 3, 2025 and WFMD-AM, April 21, 2025. Photo by Bill & Jenn Caswell.*

## Michigan

### Langley Bridge, St. Joseph County – MI/22-75-01

In the previous Newsletter, we reported that the bridge had been closed in December after two incidents within five days knocked down the height restrictors (“headache bars”) on both ends. It was re-opened on January 3<sup>rd</sup> after repairs were completed. On March 15<sup>th</sup>, WITL Radio reported that the bridge was closed again after another incident. No additional details were provided. Photo by Jim Allen.



## Missouri

### Locust Creek Bridge, Linn County – MO/25-58-01



In the previous issue, we reported that the Department of Natural Resources (DNR) closed the Locust Creek Covered Bridge State Historic Site to prepare to move the bridge. The bridge was raised off of its supports and had wheels added under it along with supports to keep it steady for its journey to its new home at Pershing State Park three miles away. On February 26<sup>th</sup>, the 151-foot-long Howe truss structure was towed out onto US36 to its new home. Once set at its new location over Locust Creek about 100 yards downstream from the historic iron bridge, approaches will be constructed, and it will become the trailhead for the park's riparian trail. The bridge was built in 1868

and added to the National Register of Historic Places on May 19, 1970. *Photo at its original location by Bob Hamilton.*

## New Hampshire

### Edgell Bridge, Grafton County – NH/29-05-11

The project to repair the 1885 single-span Town lattice truss bridge over Clay Brook described in recent Newsletters is now complete. On April 25<sup>th</sup>, the Valley News reported that the bridge is now open to traffic. *Photo by Bill and Jenn Caswell.*





## New Hampshire (continued)

### Saco River Bridge, Carroll County – NH/29-02-03#3

Area residents have asked selectmen about installing cameras on this bridge because they frequently see oversize vehicles crossing it. The 1890 bridge has a posted maximum height limit of 10 feet, 2 inches, and a weight limit of 3 tons. Two years ago, it was damaged by a truck 13 feet high weighing 15 tons. The State Department of Transportation repaired the bridge following the damage. The new laws passed last year increased fines for crossing covered bridges with oversize vehicles and permitted the installation of cameras for enforcement of height and weight limits. One of the selectmen also suggested installing wooden barricades similar to those at the Albany Bridge a few miles away to reduce the potential for over height vehicles to access the two-span Paddleford truss bridge over the Saco River. *Conway Daily Sun, March 27, 2025. Photos by Bill & Jenn Caswell.*



### Old Russell Hill Road or Livermore Bridge, Wilton, Hillsborough County – NH/29-06-P01

The Livermore Bridge is the only known example of a timber, pony lattice truss bridge in North America. Wilton town records report payments to Fred Tuttle and Nehe Pajanen for work on the bridge over Blood Brook in 1937. Records and news articles from 1937 are not clear whether an older structure was repaired or a new bridge constructed although the town's 1965 annual report does state that it was completely replaced in 1937. The span was bypassed by a new bridge ¼ mile downstream in 2003 and closed to traffic. In 2019, the Wilton Heritage Commission investigated the possibility of relocating and restoring the bridge although that project did not materialize. Due to its deteriorating condition, access to the bridge is now closed to all. The NSPCB has reached out to the Heritage Commission and other local groups to explore options for repairing the bridge. We are coordinating this effort with the New Hampshire Preservation Alliance. *Photos by Bill & Jenn Caswell.*



## New York

### Perrine's Bridge, Ulster County – NY/32-56-01

On April 23<sup>rd</sup>, Ron Knapp alerted us that a lane of the nearby Thruway bridge is being demolished to be rebuilt. The work is generating a great deal of dust which is accumulating on the timber bridge. One of the workmen noted that the project will take at least 30 days. The single-span Burr truss bridge over the Wallkill River was added to the National Register of Historic Places on April 13, 1973. *Photo by Ron Knapp.*



## Ohio

### Black or Pugh's Mill Bridge, Butler County – OH/35-09-03

On page 22 of the Winter 2024/2025 Newsletter, we noted that this bridge was to receive new siding and a new roof. The new siding will go a little higher than it is currently to help reduce the amount of rain that gets into the bridge. The repairs are nearly complete and the county plans to apply fire retardant provided by the NSPCB during the week of May 26<sup>th</sup>. The bridge over Four Mile Creek was built in 1868. It has an interesting truss which has some features of a Long truss and was the subject of a *Topics* article in the Summer 2019 issue. It was added to the National Register of Historic Places on June 5, 1975. *Photo by Greg McDuffee.*

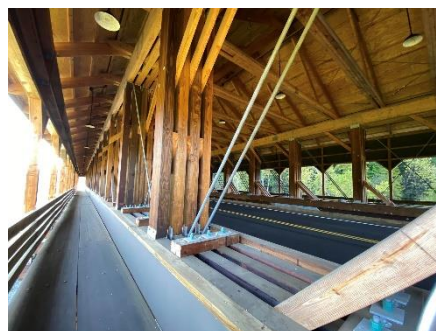


### Spellacy Bridge, Holmes County – OH/35-38-05

On March 13<sup>th</sup>, Engineering News Record announced that this two-span bridge over the Mohican River received its annual Best Small Project award. Holmes County Engineer Chris Young, Holmes County Commissioner Eric Strouse, along with representatives from Ohio Department of Transportation, Smolen Engineering, Kokosing Construction, OHM Advisors, Palmer Engineering and Dean Anderson were honored at a gala in New York City for the span which was dedicated in September 2023. The project was chosen from over 800 entries nationwide.

The project team confronted a number of hurdles, including “use of complex materials, offline bridge construction and overcoming multiple drilling and geotechnical challenges,” says the submission. That included forced redesign of one segment, requiring a quick turnaround to maintain the critical path schedule. Complex logistics in fabrication and treatment of the structure’s glulam members in different states also mandated “meticulous coordination,” says the team. Use of cofferdams enabled the team to manage turbulent river conditions, which had caused excavation site flooding during construction. The superstructure approach included building the trusses, each more than 150 ft long and nearly 20 ft tall, on a custom-built “table” adjacent to the final structure location. This enabled precise assembly and simultaneous crane lifts of two trusses. With difficult site conditions and truss weight, the contractor designed a work platform that would ultimately support 336,000 lb, the submission says.

The project, which was the largest infrastructure project in the history of Holmes County, Ohio, opened to the public five days early. The team credits that to “effective partnering, teamwork and a commitment to safety.” *Engineering News Record, March 13, 2025. Photos by Gloria Smedley.*





## Ohio (continued)



### Bickham Bridge, Logan County – OH/35-46-03

Authorities are investigating after a semi-truck hit this single span Howe truss bridge on the morning of April 26<sup>th</sup> causing “mild cosmetic damage.” While exiting the bridge, the truck driver backed into a patrol vehicle at the scene. No one was hurt in either crash. The bridge was built over the South Fork Great Miami River in 1877. *WHIO, April 26, 2025. Photo by Greg McDuffee.*

## Pennsylvania

### Kutz's Mill or Sacony Bridge, Berks County – PA/38-06-05

This 1854 Burr truss bridge over Sacony Creek was closed in early March after heavy rains caused the partial collapse of a wall supporting one of the approaches to the bridge. On April 25<sup>th</sup>, the Reading Eagle reported that it had re-opened to traffic. The damage to the retaining wall cost about \$109,000 to repair. Additional repairs, unrelated to the storm, are also needed and will be addressed later in the year. *WFMZ, March 7, 2025 and Reading Eagle, April 25, 2025. Photo by Gloria Smedley.*



### South Perkaspie Bridge, Bucks County – PA/38-09-05



Scott Bomboy has informed us that drawings for the bridge project have been completed and the abutment plans were due about the time this Newsletter was going to press. The bridge engineering and design was done by Wood Research and Development (WRD) from Jefferson, Oregon. JHA Companies of Moosic, PA designed and engineered the abutments. The remnants of Hurricane Ida in September 2021 swept the bridge off its abutments during historic flooding in the park. The Federal Emergency Management Agency (FEMA) along with the Pennsylvania Emergency Management Agency (PEMA) awarded grant funds for repairs to damage caused by the flooding.

Requests for proposals (RFP) could be out by the time you read this. The project could include some innovative work using hybrid wood-carbon fiber panels to sister<sup>1</sup> some of the damaged truss timbers. There is also an appeal to FEMA to move the bridge an additional 50 feet away from the creek to reduce the potential for future flood events. If an acceptable RFP is received, then construction can take place later this year. The single-span Town truss bridge originally crossed Pleasant Spring Creek on South Main Street in Perkaspie before being relocated to the park in 1958. It was added to the National Register of Historic Places on December 1, 1980. *Photos courtesy of Scott Bomboy and Bill & Jenn Caswell.*



<sup>1</sup> Sistering a timber is a construction technique where a new timber is attached to a damaged or weakened existing timber to restore its structural integrity and/or extend its length.



## Pennsylvania (continued)

### Little Gap Bridge, Carbon County – PA/38-13-02

Solar powered cameras were installed on this 1860 Burr truss bridge over Aquashicola Creek in March. Its headache bars with a posted 8'-6" limit have been hit several times costing the county thousands of dollars in repairs. The most recent damage in December cost the County just under \$1,000 to repair. County commissioners reviewed 36 hours of footage to find that four over height vehicles had struck the headache bar (one of them multiple times) and continued through the bridge. The commissioners have contacted the local businesses owning the vehicles. Soon, they will begin fining drivers to recover costs related to repairs caused by their vehicles. The bridge was added to the National Register of Historic Places on December 1, 1980. *Times News, March 13 and April 23, 2025. Photo by Bill & Jenn Caswell.*



### Rudolph and Arthur Bridge, Chester County – PA/38-15-01

In the previous Newsletter, we noted that construction has started on the replacement of the 1880 covered bridge which was swept away by floodwaters on September 1, 2021. Sara Beth Kohut visited the site at the end of March and noticed that construction of the abutments and approaches is underway.



### Sheeder or Hall's Bridge, Chester County – PA/38-15-12

On Sunday, May 18<sup>th</sup> there was a celebration of the bridge's 175th anniversary which also coincided with the end of See Pennsylvania's Covered Bridges Week. Local, county and state officials were invited to attend along with representatives from nearby historical associations. The Theodore Burr Covered Bridge Society of Pennsylvania set up a display to help promote covered bridges and their preservation. The single-span Burr truss structure was built over French Creek in 1850. *Photos by Gloria Smedley.*





## Pennsylvania (continued)

### Pine Grove Bridge, Chester County – PA/38-15-22#3 & PA/38-36-41#3

On March 27<sup>th</sup>, this bridge was badly damaged by an oversize vehicle. The two-span Burr truss bridge spanning Octoraro Creek was built in 1884. The driver from Montgomery County, Pennsylvania, was cited for three vehicle code violations – restrictions on use of highways and bridges, obedience to traffic control devices, and duty to give information and render aid. The bridge has a posted clearance of 10 feet, 7 inches. Temporary repairs were made and the bridge was re-opened on April 9<sup>th</sup>. Permanent repairs are expected to be completed later this year. *PennDOT press releases, March 28 and April 9, 2025 and Lancaster Online, April 9, 2025. Photos by Sara Beth Kohut.*



March 27



March 27



April 7

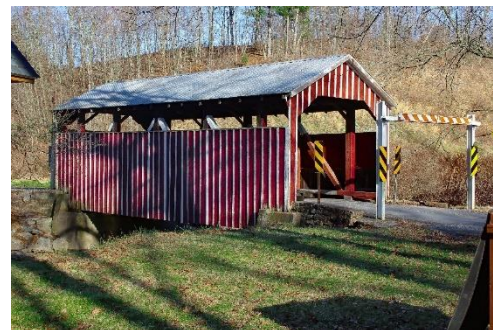
### Bogert's Bridge, Allentown, Lehigh County – PA/38-39-01



The City of Allentown advertised for bids on the project to repair this bridge and received six bids. They were in the process of awarding the project at press time. We will have more details on that in the Fall issue. Construction is planned to start towards the end of the year. The project will correct the sag in the structure, replace some deteriorated truss members, replace the decking, add a new slate roof and siding, construct new abutments, add steel beams for support and apply fire retardant. The Burr truss bridge over Little Lehigh Creek was built in 1841. It was added to the National Register of Historic Places on December 1, 1980. *Photo by Bill & Jenn Caswell.*

### Rebuck or Himmel's Church Bridge, Northumberland County – PA/38-49-06#2

State police reported that a PennDOT truck driven by 41-year-old Trent Curcie of Shamokin struck the single-span multiple kingpost bridge over Schwaben Creek on March 20<sup>th</sup>. The truck weighed more than twice the bridge's 3-ton posted weight limit as it traveled over the span. Curcie left the scene, and the collision wasn't reported to authorities until four days later. After inspection, officials determined the bridge did not need to be closed. *WKOK, March 28, 2025. Photo by Michael Rudnick.*



## Pennsylvania (continued)

### Lewisburg Penitentiary Bridge, Union County – PA/38-60-05

We have received word that the floor of this bridge has been removed. This raises concerns that the



1850 bridge over Little Buffalo Creek may be lost soon. The modified multiple kingpost truss bridge is in a unique situation being partially on private land and partially within the Lewisburg Penitentiary. *Exterior photo by Bill & Jenn Caswell (2015). Interior Photo by Jeff Smith.*



## Vermont

### Salisbury Station Bridge, Addison County – VT/45-01-01x

On page 24 of the Winter 2023/2024 *Newsletter*, we reported that the towns of Salisbury and Cornwall



overwhelmingly chose a covered bridge instead of a wider steel bridge to replace this structure which burned on September 10, 2016. Their goal was to not only replace the bridge, but to deter excessive truck traffic on a local town road in an environmentally sensitive area which is also home to a colony of bats. The estimated \$3.9 million construction cost was to be covered by federal and state

funding and include fire-retardant, insecticide, utility line extension, fire detection system and a sprinkler system. On May 8<sup>th</sup>, we received word from Beth Brown, President of the Vermont Covered Bridge Society, that due to federal funding cuts, the bridge project has been moved to 2031. *Photo before the fire by Bill Caswell (1987). Photo after the fire by Scott Wagner (September 18, 2016).*



### Chamberlin Mill or Whitcomb Bridge, Caledonia County – VT/45-03-04

A public meeting was held on May 5<sup>th</sup> to discuss this bridge's future. The Vermont Agency of Transportation and their design consultant Hoyle, Tanner & Associates noted some concerns including



leaks in the roof; damage to roof rafters, purlins and upper bracing; some rot and deterioration of truss members, lower chord and floor system; missing and rutted deck planks, several broken or rotted side boards, deterioration of abutments and poor drainage of roadway approaches. Although there are many concerns, repairs are a feasible option. The audience was overwhelmingly in favor of repairing the bridge instead of replacing it. If the repairs proceed as planned, they expect contract plans ready for advertising in the summer of 2029 with construction during 2031. Our thanks to Marcel and Jeanne Beaudry who attended the meeting and provided this report. The single-span

queenpost truss bridge was built over the South Wheelock Branch of the Passumpsic River in 1881. It was added to the National Register of Historic Places on July 30, 1974. *Photo by Bill & Jenn Caswell.*



## Vermont (continued)

### Miller's Run or Bradley Bridge, Lyndonville, Caledonia County – VT/45-03-06#2



In the previous *Newsletter* we reported that the town was working on adding steel beam barriers (what we often refer to as "headache bars") at each end of the bridge due to the repeated damage caused by oversize vehicles. Town officials asked the Lyndon Institute's welding class for assistance to save money and have the students directly involved in protecting the bridge. Thanks to the high school students, two decorative steel beam structures were installed on March 21<sup>st</sup> to guard each side of the bridge, hopefully, protecting it from oversize vehicles. About 20 students spent about two months constructing and welding the barriers. *WCAX-TV, March 21, 2025. Photos by Jeanne Beaudry.*



### Westford or Brown's River Bridge, Chittenden County – VT/45-04-05

On March 12<sup>th</sup>, the Town of Westford posted a Request for Bids for repairs to this bridge. The post mentioned a need to repair structural damage to the Burr arches, bolster beams, bearing blocks and joists, as well as flashing and sheathing utilizing protective measures to prevent future damage. Proposals were due by April 7<sup>th</sup>. The single-span bridge over Brown's River is one of the oldest in Vermont having been built in 1837. *Photo by Gloria Smedley.*



### Cambridge Junction or Poland or Station Bridge, Lamoille County – VT/45-08-02



On page 27 of our Winter 2024/2025 *Newsletter*, repairs were still underway from damage that the 1887 bridge received when the Lamoille River flooded in July 2023. At that time, the bridge work had been completed and abutment repairs were underway. Members Marcel and Jeanne Beaudry visited the site on May 11<sup>th</sup> and shared this photo of the bridge now open to traffic. The single-span structure was listed on the National Register of Historic Places on October 9, 1974.

### Williamsville Bridge, Newfane, Windham County – VT/45-13-05#2

A Massachusetts truck driver faces charges after allegedly driving a large box truck through the single span Town truss bridge over Rock River in Newfane on April 30<sup>th</sup> causing significant damage then leaving the scene. The vehicle was later found in Dover, the next town to the west. Bay Van Nguyen, 49, of Lowell, Massachusetts was charged with leaving the scene of an accident and providing false reports to law enforcement authorities. He is scheduled to appear in Vermont Superior Court's Windham County Criminal Division on June 17<sup>th</sup>. *Newport Dispatch, April 30, 2025. Photo by Bill & Jenn Caswell.*





## Canada – New Brunswick

### Germantown Lake or Shepody River #3 Bridge, Albert County – NB/55-01-08

In an email to CTV News, Department of Transportation and Infrastructure (DTI) spokesperson Jacob



MacDonald said they've recently made the decision to dismantle this single span bridge which has been closed since June 2024. This news comes just two months after the February demolition of the William Mitton Bridge, also in Albert County. It will be replaced with a single-lane modular bridge. Ronny Theriault visited the site on April 26<sup>th</sup> and took these photos of the work in progress. The project is expected to be completed during the summer. The bridge was built over Shepody River in 1903. *CTV, April 19, 2025.*

### Bloomfield Bridge, Kings County – NB/55-06-01

Crews were scheduled to start working on the single-span bridge over Bloomfield Creek on April 29<sup>th</sup>. The work will include repair and replacement of the roadway surface. The work on the 1918 span is expected to last approximately three weeks. The detour around the bridge is 20 kilometres (about 12½ miles). *Telegraph-Journal, April 21, 2025. Photo by Bill & Jenn Caswell.*



### Plumweseep or Kennebecasis River #9 Bridge, Kings County – NB/55-06-18

Last quarter, we reported that the roof shingles, decking and siding of this single-span bridge over the Kennebecasis River were being replaced. On March 25<sup>th</sup>, *CTV News reported that the project was expected to be completed around the end of March.* This span was constructed in 1910 by local bridge builder Albert E. Smye based on his bid of \$1,694.00. The name "Plumwesweep" is a Maliseet word for salmon river. *CTV News, March 25, 2025. Photo by Bill & Jenn Caswell.*



### Patrick Owens or Rusagonis River #2 Bridge, Sunbury County – NB/55-12-05

On April 7<sup>th</sup>, a single-vehicle crash closed this bridge which was recently refurbished with a new roof and siding. The two-span structure over Rusagonis River

was built in 1909 and was expected to be closed until early May. The detour around the bridge is fairly short so traffic is not significantly impacted by the



closure. *CTV, April 9, 2025. Photos courtesy Oromocto Fire Department & Rusagonis Community Facebook Page.*





## New Brunswick (continued)

### Newcastle Creek #1 Bridge, Queens County – NB/55-09-U01

Residents and leaders in Minto are calling for the province to replace an uncovered Howe truss bridge that it plans to close in the community instead of the proposed plans to upgrade a road as a permanent detour for residents on the other side. Opponents of the plan say that the road is unusable for some of the year, and relying on it would isolate residents and put them in jeopardy without prompt ambulance, fire and police service. The Department of Transportation and Infrastructure is currently reviewing options for the potential closure of this bridge spanning Newcastle Creek at the top end of Grand Lake, east of Minto.



Grand Lake Mayor Kevin Nicklin said the proposed detour is often impassable in the spring. The project is estimated at \$2.8 million, whereas a modular bridge to replace the one there now would cost \$3 million. Officials are also concerned about the potential environmental impact of what might be uncovered when work is done on the alternate route, which was formerly part of an old mining operation. *Telegraph-Journal, April 2, 2025. Photo by Bill & Jenn Caswell.*

### Wheaton or Tantramar River #2 Bridge, Westmorland County – NB/55-14-13

The single-span bridge crossing the Tantramar River was closed on July 11, 2024 after an inspection raised concerns about its structural condition. Local officials and residents, concerned that the bridge might be removed, have been contacting local and provincial officials to have it repaired and re-opened without success.



On May 16<sup>th</sup>, Megan Mitton, MLA for the Tantramar Region, posted that she recently met with the Department of Transportation and Infrastructure (DTI) who indicated that they plan “to install a modular bridge beside the current covered bridge. Several steps still need to happen in order to install the modular bridge, like land acquisition and environmental and archaeological assessments, and I’m pushing for the fastest timeline possible.” DTI indicated that they are not able to adequately repair the current bridge to carry vehicular traffic so Ms. Mitton is having discussions with the Minister of Tourism, Heritage and Culture to have it preserved as a pedestrian bridge. *Photos by Bill & Jenn Caswell.*



## Ontario

### West Montrose Bridge, Waterloo County – ON/59-50-01

Design of the repairs are complete and the project has been advertised for construction. At press time, the bid process had ended, and the results were being reviewed. If all goes well, construction could begin later this summer. Details of the proposed work were included on page 5 of the Winter 2023/2024 *Newsletter*. Visit the Region of Waterloo’s website at <https://www.engagewr.ca/west-montrose> for the latest information on this project. *Photo by Gloria Smedley.*



## Québec

We are grateful to Pascal Conner whose *Blogue sur les ponts couverts* ([pontscouverts.com/blogue/](https://pontscouverts.com/blogue/)) provides most of the Québec news each quarter. Unless otherwise noted, all Québec articles were derived from that website.

### Pont Alphonse-Normandin, Abitibi-Témiscamingue Region – QC/61-01-05

We last reported on this bridge on page 26 of the Summer 2024 issue. The single-span Québec-style Town lattice truss bridge was dismantled during the summer of 2023 and moved off site for repairs to the trusses. The work on the structure has been complete for a year now, but the roadway approach work has not yet been completed. A news report in late February noted that the Ministry of Transport has not indicated when they will resume work at the site. The bridge was built over Rivière Davy in 1950. *TVA Abitibi-Témiscamingue, February 27, 2025. Photo by Pascal Conner.*



### Pont d'Eustis, Cantons de l'Est – QC/61-18-02#2

Pascal Conner visited this bridge in early May and shared these



photos indicating that some of the siding had been replaced. A single-span multiple kingpost truss bridge was constructed at this location over Rivière Massawippi in 1908. It was reconstructed in 1998, but developed an alarming sag within a few years. It was reconstructed again in 2011 by Hamlet Heavy Timberwork when most of the remaining historic material was replaced with new wood.



### Pont Prud'homme, Laurentides Region – QC/61-72-01

Deputy Premier and Minister of Transport and Sustainable Mobility, Geneviève Guilbault, visited the Transports Québec sub-service centre in Mont-Tremblant to announce an investment of \$386,160,000 over the next two years. She stated that the bridge's rehabilitation was planned for 2025-2027, and that the tendering process should



begin no later than 2026. This is excellent news for this structure, which has been closed to traffic since 2019. The SOS Prud'homme Bridge Committee and SOPABIC

Heritage Society are hosting an event at the bridge on May 24<sup>th</sup> which will include a lecture by historian Philippe Aubry about the original route of Route 57, the ancestor of today's Route 323. *L'Info du Nord, April 16, 2025 and SOS Prud'homme Facebook Page. Photo Courtesy SOS Pont Prud'homme.*





## China

### Lanxi Bridge, Qingyuan County, Zhejiang Province

On April 18<sup>th</sup>, a press release from Hikvision, a Chinese security company based in Hangzhou, Zhejiang Province stated that they have outfitted the 16<sup>th</sup> century Lanxi Bridge with a fire detection system. The bridge is the largest single-span ancient covered bridge in China. Like the others, Lanxi Bridge is constructed without nails or steel, using traditional Chinese mortise and tenon joints. These designs have been recognized by UNESCO for their global contribution to culture.

According to the press release, “Multispectral fire detectors are installed at four locations to ensure comprehensive protection of the entire bridge. These detectors enhance visible and thermal imaging technologies with infrared flame detection, enabling them to penetrate darkness and detect even the slightest temperature anomalies. Meanwhile, the fire prevention solution can automatically alert individuals smoking on the bridge to stop and immediately notify conservators to conduct onsite inspections.” *Photo provided by Hikvision.*



## Romania

### Urmánczy Bridge, Toplița, Harghita County

We have learned that a covered bridge which we weren't previously aware of has collapsed. The 150-year-old span over the Mureș River east of the town of Toplița in the northern part of the country collapsed on April 30<sup>th</sup>. The area has a large Hungarian population who refer to the town as Maroshévíz. The bridge was constructed by the Urmánczy family in 1869 so workers could access parts of their estate on the opposite side of the river.



The bridge was owned by the local government which had received numerous reports of vandalism at the site over the years. Although some repairs were made in 2020, people quoted in the article commented that the government didn't do enough to protect the bridge. It is believed that these acts of vandalism ultimately caused its collapse. A chainsaw had been used to cut some of the truss timbers. A camera placed

at the bridge was also destroyed.

The article mentioned two other covered bridges in the area, one at Hordó (Coșbuc) which we were aware of and one in Gyergyószárhegy (Lăzarea) which was new to us. *Daily News Hungary, May 1, 2025. Photos credited to Sebastian Buzila*



## Honey Run Bridge Rebuilt

The original Honey Run bridge had three separate roof lines, the center section was five feet higher than the end sections. The northern span was a kingpost truss 30 feet long, the center span was a Pratt truss 128 feet long and the southern span was a Pratt truss 80 feet long.

Research done during 2016-17 of Butte County newspapers, county road and engineering and other public records show the original Honey Run (Carr Hill) Bridge was built in 1886 and opened to the public in January 1887. It was covered in 1901 to protect the structure and flooring.



Stories about the demise of this bridge in 1894 by being washed away may refer to another location. Also, the story that in May 1895, three school children attempting to ford the creek in a light wagon were swept downstream and drowned may also refer to another location.

The bridge was included in the 1955 film "Friendly Persuasion" starring Gary Cooper, Dorothy McGuire, and Anthony Perkins.



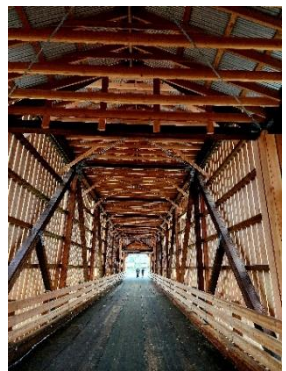
On April 12, 1965, a truck crashed into one corner of the bridge, collapsing the eastern span. The Butte County Department of Public Works initiated plans for a new two-lane highway bridge upstream of the covered bridge. While the new bridge was under construction in 1965-66, public support was growing in favor of restoring and preserving the covered bridge culminating in the creation of the Honey Run Covered Bridge Association. The bridge was rehabilitated and opened to pedestrians in 1972. In the Historic American Engineering Record (HAER) documentation (2002), the Honey Run Bridge was

described as the best preserved of four surviving examples of Pratt-type wood covered bridges in the United States.

On Thursday, November 8, 2018, the bridge was consumed by the Camp Fire which also destroyed thousands of homes and claimed at least nine lives. Fundraising efforts by the Honey Run Covered Bridge Association plus insurance money related to the fire allowed for a new bridge to be constructed.

Phase 1, erecting the support pylons, was completed in November 2020 with \$1.2 million contributed by donors. Fundraising continued for the remaining phases. On August 17, 2023, the HRCBA announced that the Fire Victim Trust awarded them \$4.7 million, enough to fund the remainder of the project.

Phase 2, the floor and trusses, estimated at \$2.2 million, was to start next. Parts of the bridge were constructed offsite and delivered in late June 2024 where crews started assembling them. One by one, the three spans were assembled and lifted onto their supports.



HRCBA President Schafer speaking at the Ribbon Cutting Ceremony

The new covered bridge was completed in January 2025 and had a ribbon-cutting ceremony on April 12, 2025. At the event, it was noted that the new bridge is not an exact replica of the original, but as close as they could get while adhering to current building codes.

The current leader of the HRCBA, Walt Schafer, was a professor of sociology and during the 1999-2000 academic year, he served as interim dean of the College of Behavioral and Social Sciences at Chico State University. In 2004-2005, Schafer was president of the Chico Rotary Club. *Top photo of the original bridge by Bill & Jenn Caswell. Photo after 1965 accident is from the Todd Clark Collection. Lower two photos by Tyler Colwell.*